

Type of Incident Report

From January 1, 2003 to December 31, 2003

Svc Area	AO with One or More Patients to Hospital		No Patient Transport		All Units Cancelled		Total
	Count	Percent	Count	Percent	Count	Percent	
A	2,193	71%	746	24%	170	5%	3,109
B	2,309	51%	930	20%	1,317	29%	4,556
C	1,965	65%	643	21%	418	14%	3,026
D	1,926	66%	688	24%	283	10%	2,897
E	521	54%	299	31%	141	15%	961
Other	23	26%	13	15%	52	59%	88
Total	8,937	61%	3,319	23%	2,381	16%	14,637

Prior year comparisons	Svc Area	1990	1994	1997	1998	1999	2000	2001	2002
	A	1,942	2,419	2,544	2,515	2,680	2,900	3,088	3,144
	B	3,639	3,457	3,676	3,652	3,838	4,181	4,445	4,324
	C	2,257	2,238	2,333	2,482	2,522	2,698	2,927	3,152
	D	3,782	2,265	2,415	2,583	2,690	2,882	3,170	3,018
	E	865	710	725	757	836	839	950	1,018
	Other	14	21	5	15	23	23	85	71
	Total	12,499	11,110	11,698	12,004	12,589	13,523	14,665	14,727

Definitions:

Patient Transport The number of times that an incident resulted in one or more patients going to a hospital. This is NOT a count of patients going to the hospital.

No Patient Transport The number of times that at least one of the units was not cancelled and there was no unit transporting a patient to the hospital.

All Units Cancelled The number of times that all units dispatched to the scene were cancelled.

Service Area A Code 3 Compliance Report

From January 1, 2003 to December 31, 2003

Total ALS Code 3 Incidents within Service Area: 2659

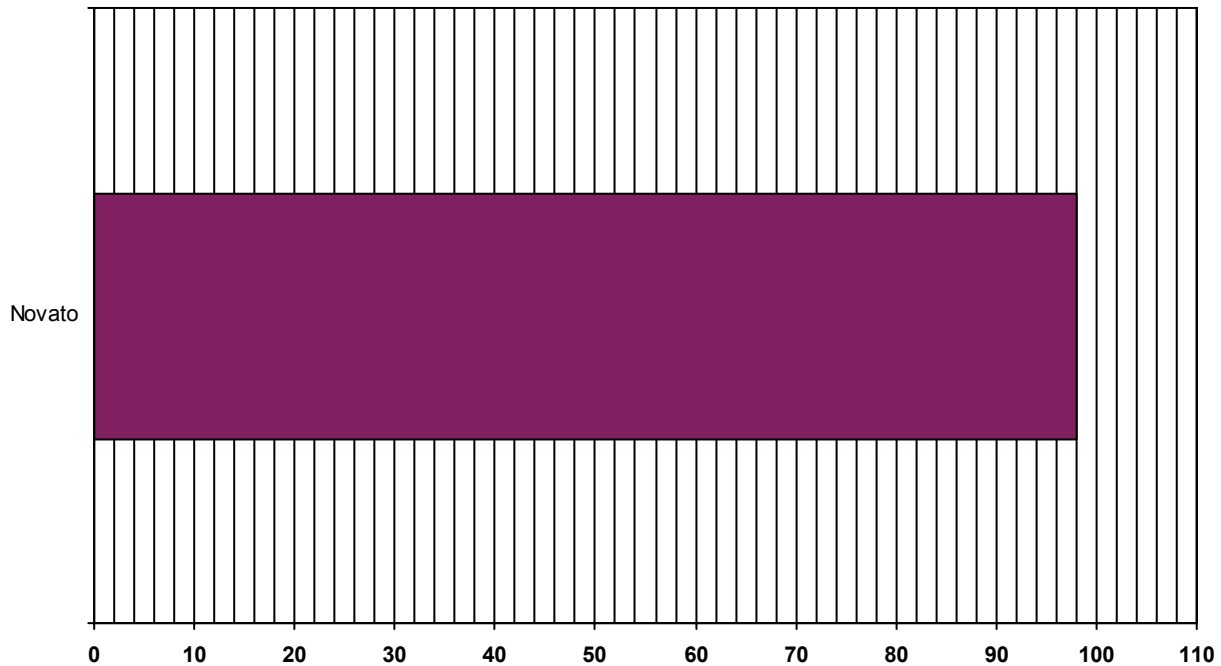
Elapsed Time from Dispatch to Arrive at Scene

Minutes:	0-1	2	3	4	5	6	7	8	9	10	11-20	21-30	> 30
Count:	91	171	437	640	564	356	177	88	62	22	48	2	1
Percent:	3.4%	6.4%	16.4%	24.1%	21.2%	13.4%	6.7%	3.3%	2.3%	.8%	1.8%	.1%	.0%
Overall %:	3.4%	9.9%	26.3%	50.4%	71.6%	85.0%	91.6%	94.9%	97.3%	98.1%	99.9%	100.0%	100.0%

Service Area A Code 3 Incidents	Total ALS Code 3 Incidents	Exceeded Expected Times	Within Expected Times	Percent Within Expected Times
To Scene Times	2659	51	2608	98.08%

Report by City

Expected time to scene is within 10 minute:



City/Area	Number of Code 3 Calls to Scene within Compliance	Number of Code 3 Calls	Percentage of Code 3 Calls to Scene in Compliance
Novato	2608	2659	98.08%

Service Area B Code 3 Compliance Report

From January 1, 2003 to December 31, 2003

Total ALS Code 3 Incidents within Service Area: 3076

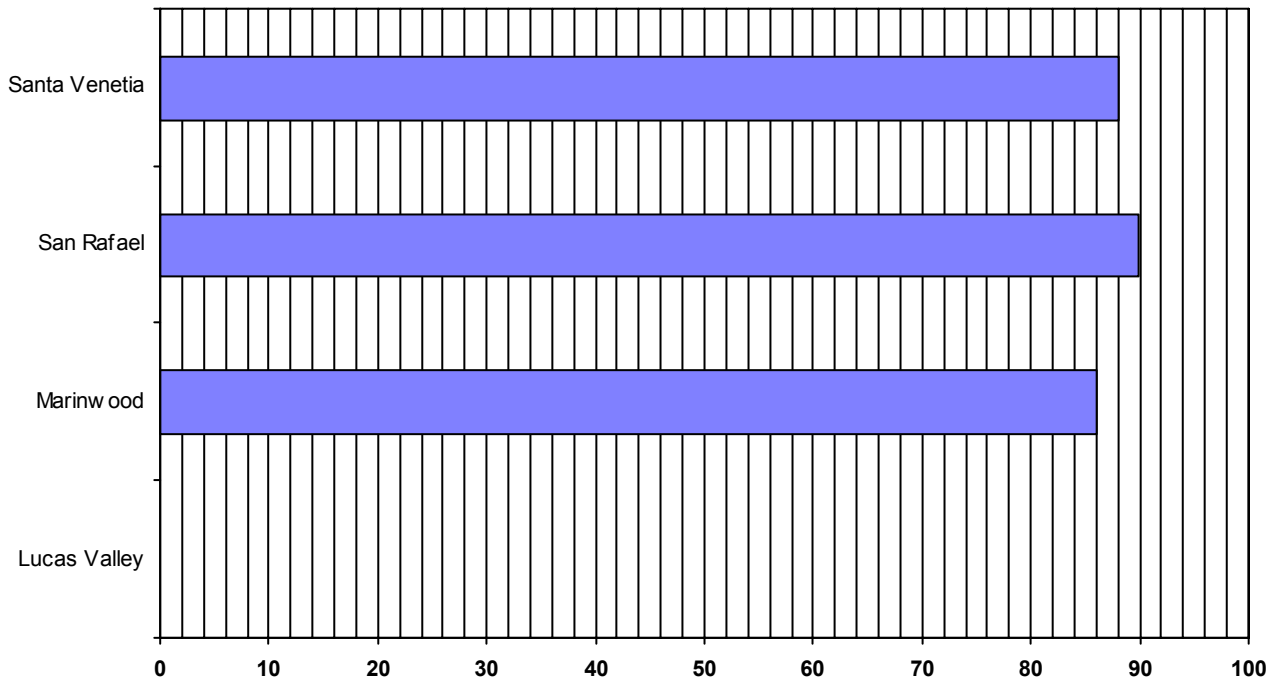
Elapsed Time from Dispatch to Arrive at Scene

Minutes:	0-1	2	3	4	5	6	7	8	9	10	11-20	21-30	> 30
Count:	164	220	328	374	428	374	339	255	147	120	298	20	6
Percent:	5.3%	7.2%	10.7%	12.2%	13.9%	12.2%	11.0%	8.3%	4.8%	3.9%	9.7%	.7%	.2%
Overall %:	5.3%	12.5%	23.1%	35.3%	49.2%	61.4%	72.4%	80.7%	85.5%	89.4%	99.1%	99.7%	99.9%

Service Area B Code 3 Incidents	Total ALS Code 3 Incidents	Exceeded Expected Times	Within Expected Times	Percent Within Expected Times
To Scene Times	3076	324	2752	89.46%

Report by City

Expected time to scene is within 10 minute:



City/Area	Number of Code 3 Calls to Scene within Compliance	Number of Code 3 Calls	Percentage of Code 3 Calls to Scene in Compliance
Lucas Valley	0	5	0%
Marinwood	142	165	86.06%
San Rafael	2470	2747	89.91%
Santa Venetia	140	159	88.05%

Service Area C Code 3 Compliance Report

From January 1, 2003 to December 31, 2003

Total ALS Code 3 Incidents within Service Area: 2321

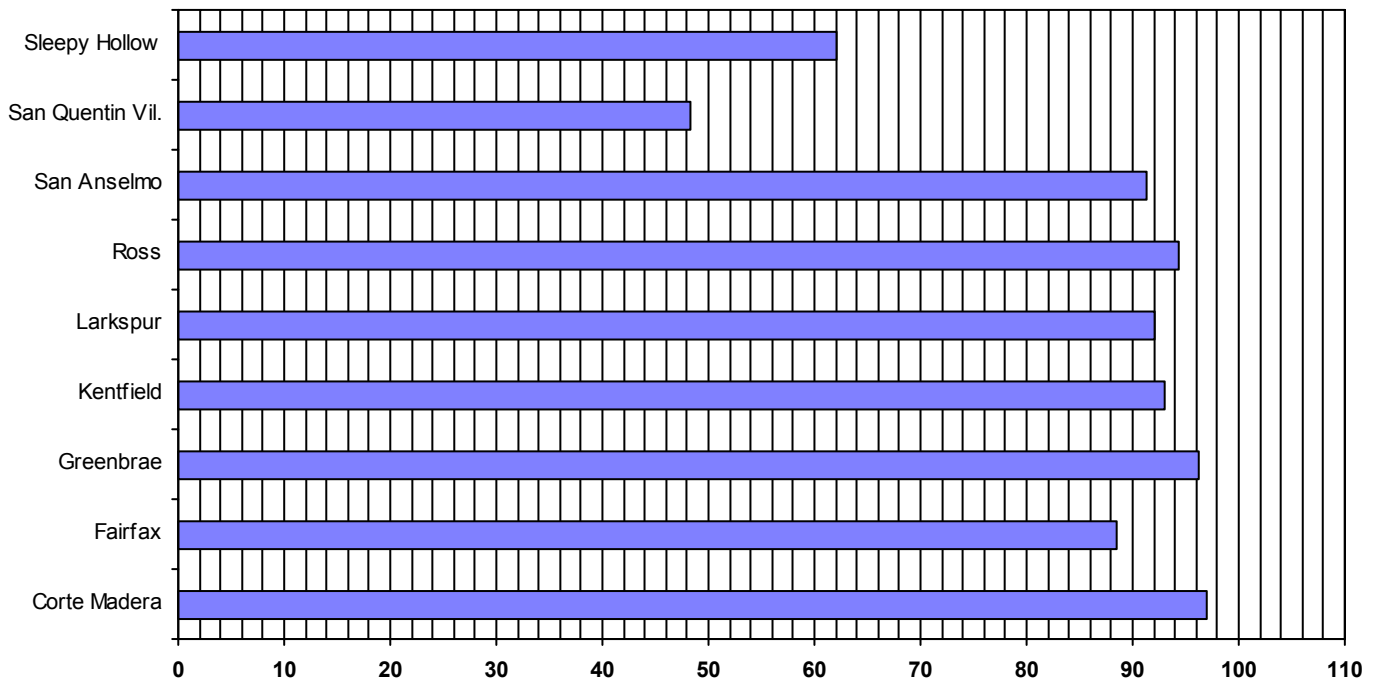
Elapsed Time from Dispatch to Arrive at Scene

Minutes:	0-1	2	3	4	5	6	7	8	9	10	11-20	21-30	> 30
Count:	69	137	253	301	351	314	257	197	134	92	200	15	1
Percent:	3.0%	5.9%	10.9%	13.0%	15.1%	13.5%	11.1%	8.5%	5.8%	4.0%	8.6%	.6%	.0%
Overall %:	3.0%	8.9%	19.8%	32.7%	47.9%	61.4%	72.5%	81.0%	86.7%	90.7%	99.3%	100.0%	100.0%

Service Area C Code 3 Incidents	Total ALS Code 3 Incidents	Exceeded Expected Times	Within Expected Times	Percent Within Expected Times
To Scene Times	2321	216	2105	90.69%

Report by City

Expected time to scene is within 10 minute:



City/Area	Number of Code 3 Calls to Scene within Compliance	Number of Code 3 Calls	Percentage of Code 3 Calls to Scene in Compliance
Corte Madera	452	466	96.99%
Fairfax	302	341	88.56%
Greenbrae	100	104	96.15%
Kentfield	243	261	93.1%
Larkspur	447	485	92.16%
Ross	67	71	94.36%
San Anselmo	419	459	91.28%
San Quentin Vil.	29	60	48.33%
Sleepy Hollow	46	74	62.16%

Service Area D Code 3 Compliance Report

From January 1, 2003 to December 31, 2003

Total ALS Code 3 Incidents within Service Area: 2275

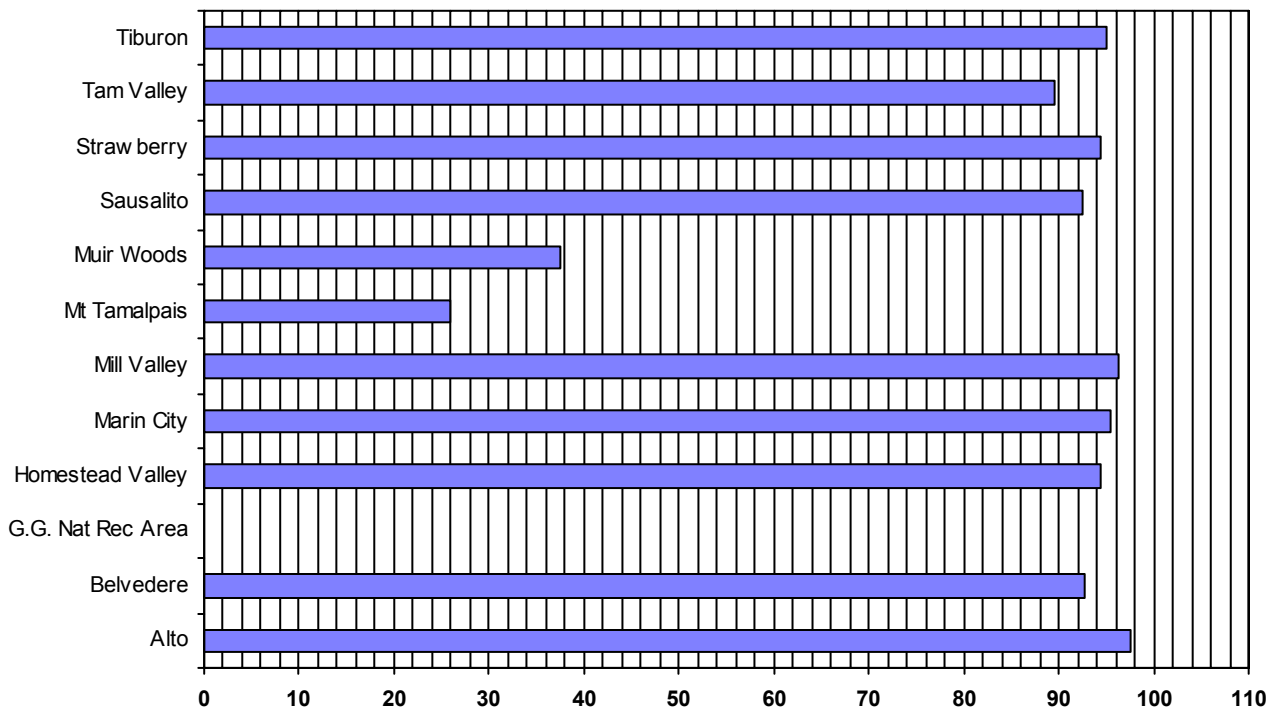
Elapsed Time from Dispatch to Arrive at Scene

Minutes:	0-1	2	3	4	5	6	7	8	9	10	11-20	21-30	> 30
Count:	75	113	235	351	364	324	267	175	120	83	147	16	4
Percent:	3.3%	5.0%	10.3%	15.4%	16.0%	14.2%	11.7%	7.7%	5.3%	3.6%	6.5%	.7%	.2%
Overall %:	3.3%	8.3%	18.6%	34.0%	50.0%	64.3%	76.0%	83.7%	89.0%	92.6%	99.1%	99.8%	100.0%

Service Area D Code 3 Incidents	Total ALS Code 3 Incidents	Exceeded Expected Times	Within Expected Times	Percent Within Expected Times
To Scene Times	2275	167	2108	92.65%

Report by City

Expected time to scene is within 10 minute:



City/Area	Number of Code 3 Calls to Scene within Compliance	Number of Code 3 Calls	Percentage of Code 3 Calls to Scene in Compliance
Alto	41	42	97.61%
Belvedere	76	82	92.68%
G.G. Nat Rec Area	0	2	0%
Homestead Valley	50	53	94.33%
Marin City	213	223	95.51%
Mill Valley	638	663	96.22%
Mt Tamalpais	13	50	26%
Muir Woods	3	8	37.5%
Sausalito	323	349	92.55%
Strawberry	151	160	94.37%
Tam Valley	180	201	89.55%
Tiburon	420	442	95.02%

Service Area E Code 3 Compliance Report

Rural Areas - Compliance is 30 Minutes to the Scene

From January 1, 2003 to December 31, 2003

Total ALS Code 3 Incidents within Service Area: 691

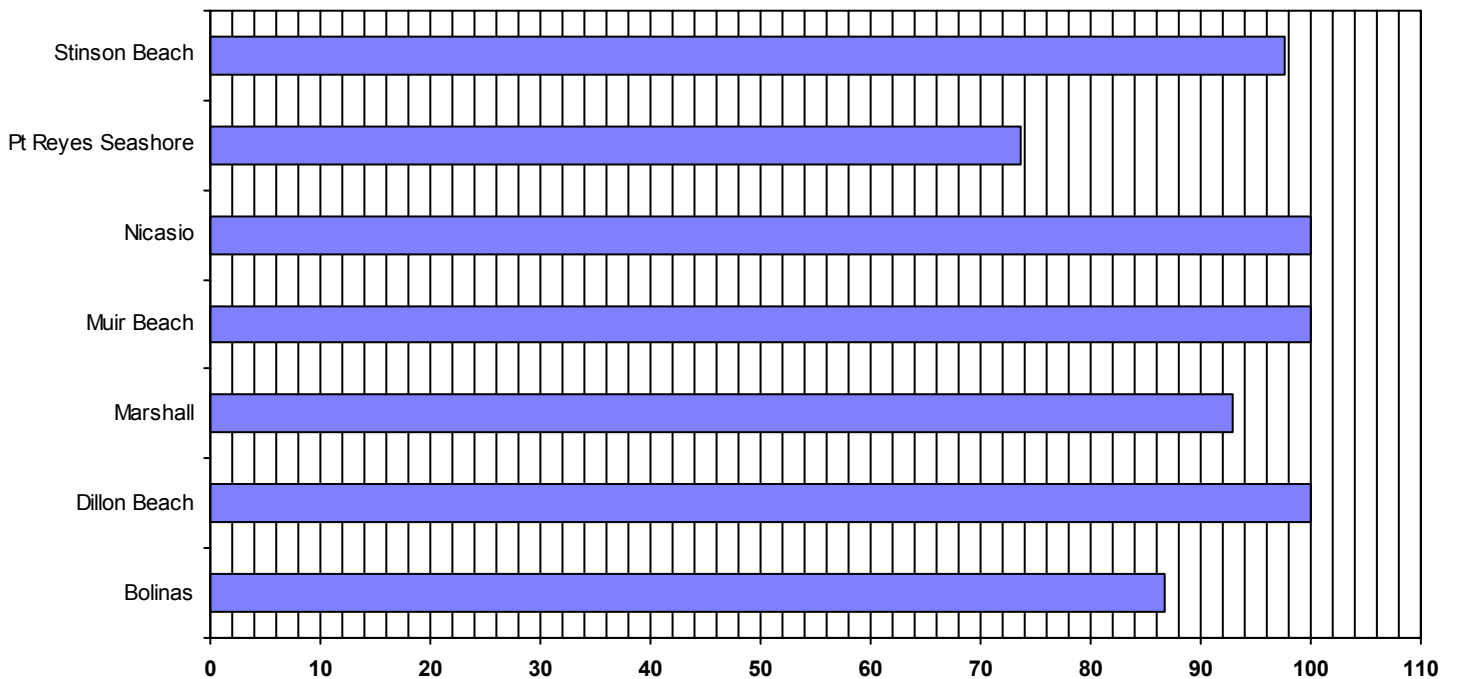
Elapsed Time from Dispatch to Arrive at Scene

Minutes:	0-1	2	3	4	5	6	7	8	9	10	11-20	21-30	> 30
Count:	59	28	42	38	40	47	57	35	23	32	170	97	23
Percent:	8.5%	4.1%	6.1%	5.5%	5.8%	6.8%	8.2%	5.1%	3.3%	4.6%	24.6%	14.0%	3.3%
Overall %:	8.5%	12.6%	18.7%	24.2%	30.0%	36.8%	45.0%	50.1%	53.4%	58.0%	82.6%	96.7%	100.0%

Service Area E Code 3 Incidents	Total ALS Code 3 Incidents	Exceeded Expected Times	Within Expected Times	Percent Within Expected Times
To Scene Times	300	21	279	93%

Report by City

Expected time to scene is within 30 minute:



City/Area	Number of Code 3 Calls to Scene within Compliance	Number of Code 3 Calls	Percentage of Code 3 Calls to Scene in Compliance
Bolinas	79	91	86.81%
Dillon Beach	17	17	100%
Marshall	26	28	92.85%
Muir Beach	13	13	100%
Nicasio	45	45	100%
Pt Reyes Seashore	14	19	73.68%
Stinson Beach	85	87	97.7%

Service Area E Code 3 Compliance Report

Urban Areas - Compliance is 10 Minutes to the Scene

From January 1, 2003 to December 31, 2003

Total ALS Code 3 Incidents within Service Area: 391

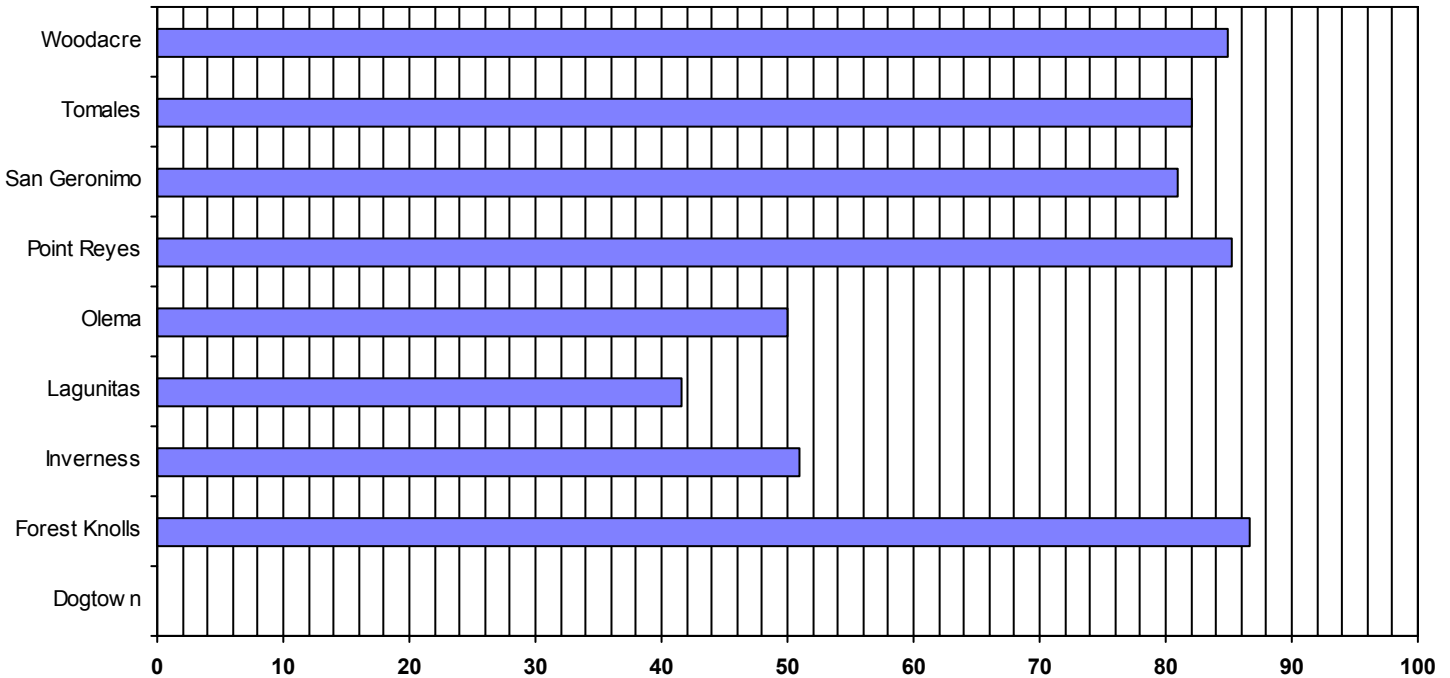
Elapsed Time from Dispatch to Arrive at Scene

Minutes:	0-1	2	3	4	5	6	7	8	9	10	11-20	21-30	> 30
Count:	47	24	39	31	31	33	37	25	12	17	75	18	2
Percent:	12.0%	6.1%	10.0%	7.9%	7.9%	8.4%	9.5%	6.4%	3.1%	4.3%	19.2%	4.6%	.5%
Overall %:	12.0%	18.2%	28.1%	36.1%	44.0%	52.4%	61.9%	68.3%	71.4%	75.7%	94.9%	99.5%	100.0%

Service Area E Code 3 Incidents	Total ALS Code 3 Incidents	Exceeded Expected Times	Within Expected Times	Percent Within Expected Times
To Scene Times	391	95	296	75.7%

Report by City

Expected time to scene is within 10 minute:



City/Area	Number of Code 3 Calls to Scene within Compliance	Number of Code 3 Calls	Percentage of Code 3 Calls to Scene in Compliance
Dogtown	0	5	0%
Forest Knolls	26	30	86.66%
Inverness	25	49	51.02%
Lagunitas	10	24	41.66%
Olema	6	12	50%
Point Reyes	116	136	85.29%
San Geronimo	17	21	80.95%
Tomales	23	28	82.14%
Woodacre	73	86	84.88%

Incidents by Day of Week Report

From January 1, 2003 to December 31, 2003

Months	Sun	Mon	Tue	Wed	Thu	Fri	Sat
01	138	153	142	173	177	221	149
02	142	178	163	150	149	181	180
03	201	186	171	167	140	158	193
04	152	161	158	197	133	161	156
05	175	177	150	149	175	224	210
06	172	212	159	162	177	176	161
07	170	168	173	189	197	153	164
08	217	176	148	164	168	220	209
09	151	196	210	179	183	164	187
10	161	166	196	192	191	210	167
11	205	144	174	141	155	150	203
12	142	228	208	218	146	183	162
Grand Total:	2026	2145	2052	2081	1991	2201	2141

Note: Report is based upon the number of "Authorization Numbers" issued to incidents within the service area. This could include some calls the provider did not respond to.

Hourly Call Volume Report

From January 1, 2003 to December 31, 2003

Month	Hour																							
	00	01	02	03	04	05	06	07	08	09	10	11	12	13	14	15	16	17	18	19	20	21	22	23
01	28	27	19	24	22	23	25	52	51	52	72	64	67	62	68	76	65	50	71	60	50	40	50	35
02	26	24	15	22	21	19	19	39	66	67	70	61	89	61	75	64	79	61	54	49	40	49	46	27
03	24	31	23	25	18	25	31	39	50	68	74	76	79	82	69	76	66	67	67	57	44	42	42	41
04	20	22	19	7	17	15	16	37	59	45	85	86	59	69	68	70	55	63	70	55	63	50	34	34
05	23	30	23	21	12	16	24	41	62	66	52	56	71	105	70	75	74	80	77	61	66	68	38	49
06	24	25	29	21	16	20	18	30	40	49	83	79	50	93	93	69	75	65	83	66	57	56	45	33
07	33	35	16	17	17	12	26	37	49	70	82	72	80	81	71	77	66	68	69	51	57	54	36	38
08	34	28	26	27	14	23	25	32	61	55	70	82	87	70	75	93	88	66	89	70	50	53	52	32
09	26	29	24	18	12	25	24	34	65	67	78	89	95	61	88	80	70	66	83	58	64	44	31	39
10	23	22	26	24	18	15	28	48	63	57	95	78	79	83	85	70	71	73	66	67	52	58	43	39
11	26	32	24	28	27	14	19	42	52	83	74	68	76	64	58	76	54	70	61	48	59	47	37	33
12	30	33	33	23	16	21	34	39	65	73	70	85	84	72	63	75	79	68	73	67	60	48	37	39
Grand Total:	317	338	277	257	210	228	289	470	683	752	905	896	916	903	883	901	842	797	863	709	662	609	491	439

Note: Report based upon number of "Authorization Numbers" issued to incidents within the service agency. This includes calls the provider did not respond

Incident Dispatches by Service Area by Month

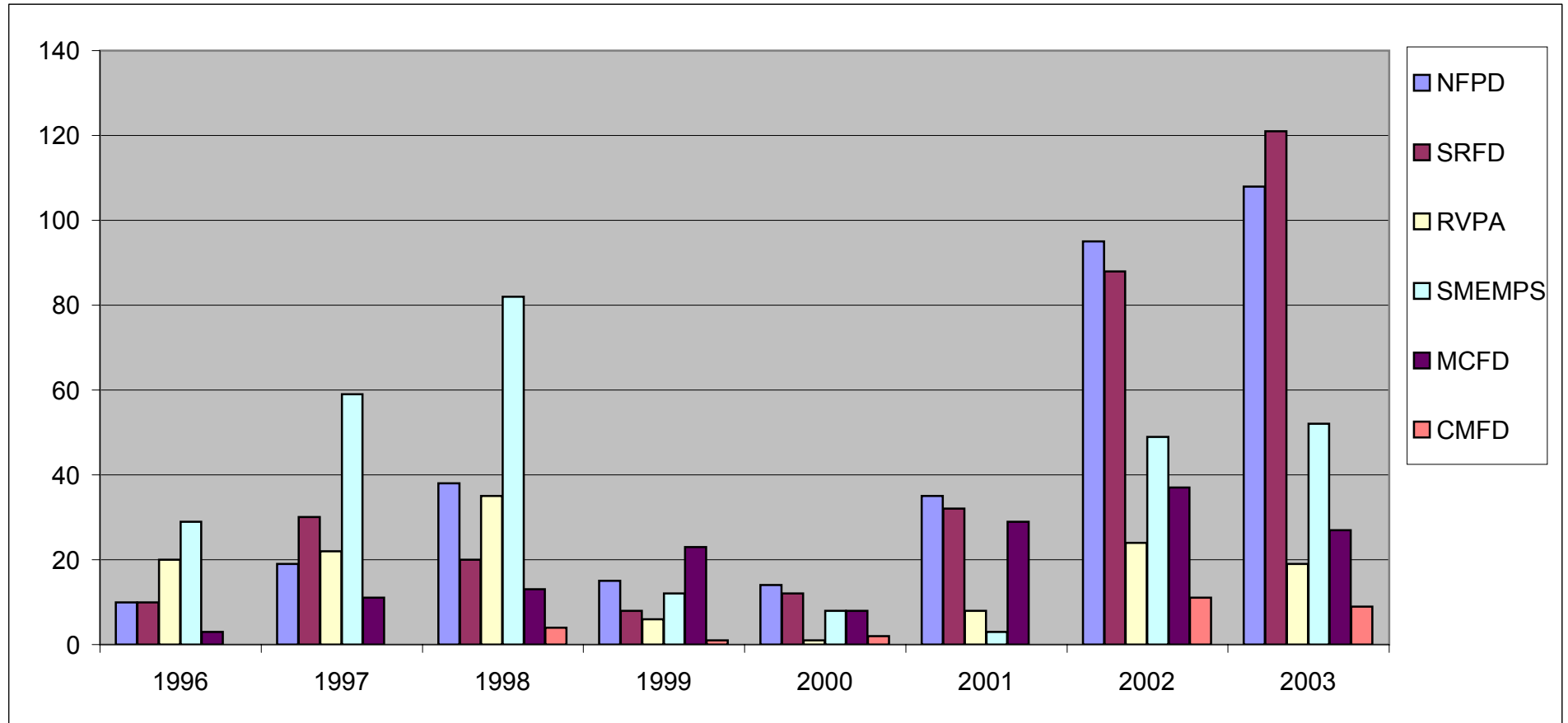
From January 1, 2003 to December 31, 2003

Month	PSA A	PSA B	PSA C	PSA D	PSA E	Other	Total
Jan	253	407	231	205	50	7	1,153
Feb	236	346	265	227	64	5	1,143
Mar	294	357	229	258	72	6	1,216
Apr	264	351	188	236	66	13	1,118
May	270	408	253	233	91	5	1,260
Jun	248	343	251	262	113	2	1,219
Jul	235	383	255	233	97	11	1,214
Aug	234	390	270	287	114	7	1,302
Sep	283	351	291	254	81	10	1,270
Oct	265	402	270	249	89	8	1,283
Nov	245	382	269	207	63	6	1,172
Dec	282	436	254	246	61	8	1,287
Total	3,109	4,556	3,026	2,897	961	88	14,637

Missing Patient Care Records

From January 1, 2003 to December 31, 2003

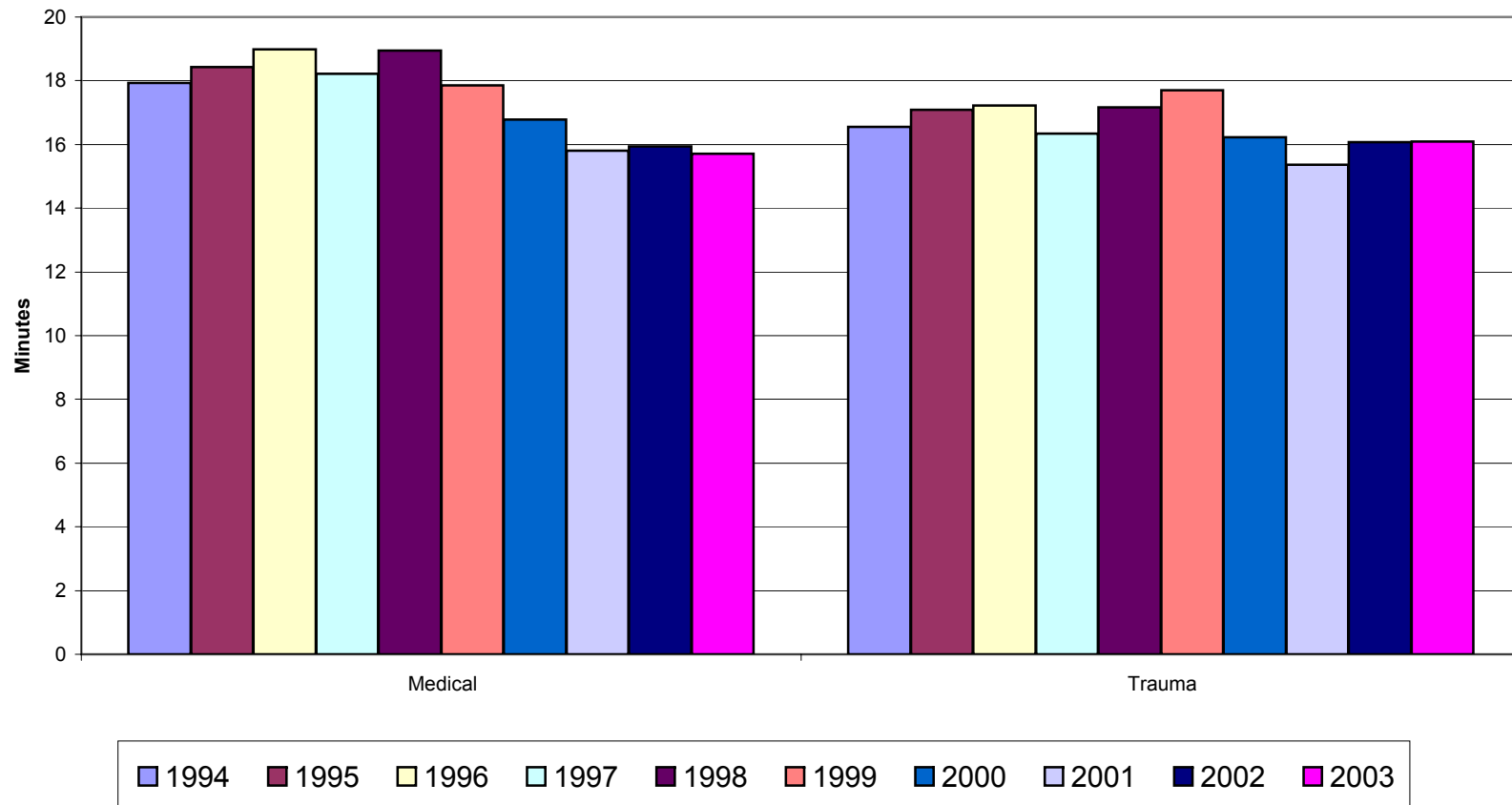
Provider	1996	1997	1998	1999	2000	2001	2002			2003		
	Dispatch with Veh to Hosp but no PCR	Dispatch with Veh to Hosp but no PCR	Dispatch with Veh to Hosp but no PCR	Dispatch with Veh to Hosp but no PCR	Dispatch with Veh to Hosp but no PCR	Dispatch with Veh to Hosp but no PCR	Dispatch with Veh to Hosp	Dispatch with Veh to Hosp but no PCR	Percent	Dispatch with Veh to Hosp	Dispatch with Veh to Hosp but no PCR	Percent
NFPD	10	19	38	15	14	35	2312	95	4.11%	2269	108	4.76%
SRFD	10	30	20	8	12	32	2352	88	3.74%	2311	121	5.24%
RVPA	20	22	35	6	1	8	1125	24	2.13%	1043	19	1.82%
SMEMPS	29	59	82	12	8	3	2037	49	2.41%	1928	52	2.70%
MCFD	3	11	13	23	8	29	598	37	6.19%	562	27	4.80%
CMFD	-	-	4	1	2	0	503	11	2.19%	460	9	1.96%
Total	72	141	192	65	45	107	8927	304	3.41%	8573	336	3.92%



Average Time at Scene

From January 1, 2003 to December 31, 2003

Comparison of Average Time at the Scene										
	1994	1995	1996	1997	1998	1999	2000	2001	2002	2003
Medical	17.94	18.42	18.99	18.22	18.94	17.86	16.79	15.81	15.93	15.70
Trauma	16.55	17.08	17.22	16.35	17.17	17.71	16.23	15.36	16.07	16.10



BLS Procedures

From January 1, 2003 to December 31, 2003

Procedures	1995	1996	1997	1998	1999		2000		2001		2002		2003	
	Count	Count	Count	Count	Count	+/- 1998	Count	+/- 1999	Count	+/- 2000	Count	+/- 2001	Count	+/- 2002
Airway oral care	-	-	12	-	33	33	18	(15)	10	(8)	20	10	24	4
Airway adjuncts, OPA/nasal	51	133	174	153	136	(17)	142	6	168	26	164	(4)	199	35
CPR	113	117	142	128	164	36	139	(25)	164	25	103	(61)	151	48
Defibrillation, semi-automatic	9	21	46	54	38	(16)	43	5	55	12	18	(37)	51	33
Dress wounds/bandaging	221	318	451	577	595	18	608	13	687	79	675	(12)	584	(91)
Hemorrhage control	5	60	105	159	126	(33)	110	(16)	101	(9)	122	21	121	(1)
Obstetric assistance	2	10	6	7	3	(4)	6	3	9	3	4	(5)	5	1
Other BLS treatment	349	563	510	676	269	(407)	301	32	583	282	459	(124)	318	(141)
Oxygen Mask/Cannula	5,287	4,806	5,556	5,716	6,053	337	6688	635	7371	683	7749	378	7594	(155)
PPV, BVM	84	123	190	191	199	8	192	(7)	199	7	175	(24)	199	24
PPV, demand ventilator	7	11	32	42	50	8	32	(18)	33	1	26	(7)	28	2
PPV, mouth to mask	1	2	4	-	3	3	4	1	4	-	3	(1)	2	(1)
PPV, mouth to mouth/nose	1	2	9	2	2	-	1	(1)	3	2	2	(1)	6	4
Psychiatric assistance	6	27	50	67	66	(1)	36	(30)	18	(18)	24	6	21	(3)
Restraints	1	24	28	37	25	(12)	25	-	25	-	42	17	19	(23)
Spinal Immobilization	1,795	832	1,141	1,225	1,049	(176)	1139	90	1247	108	1441	194	1438	(3)
Splint	317	255	362	427	390	(37)	379	(11)	391	12	367	(24)	305	(62)
Suction	99	97	124	118	137	19	106	(31)	101	(5)	96	(5)	106	10
Traction splint	1	5	5	6	11	5	8	(3)	8	-	7	(1)	7	-
	8,349	7,406	8,947	9,585	9,349	(236)	9977	628	11177	1,200	11497	320	11178	(319)

ALS Procedures

From January 1, 2003 to December 31, 2003

Procedures	1996	1997	1998	1999		2000		2001		2002		2003	
	Count	Count	Count	Count	+/- 1998	Count	+/- 1999	Count	+/- 2000	Count	+/- 2001	Count	+/- 2002
12-Lead EKG										343	343	265	-78
Blood draw	270	299	113	77	-36	64	-13	53	-11	39	-14	4	-35
Cardiovert	0	7	7	3	-4	12	9	6	-6	7	1	9	2
Carotid sinus massage	0	0	0	0	0	0	0						
Cricothyrotomy, needle	0	0	0	0	0	0	0						
Defibrillation	157	135	164	143	-21	150	7	218	68	118	-100	118	0
ECG monitor	83	2857	5164	6318	1154	6447	129	6925	478	7178	253	7159	-19
Endotracheal intubation, nasal	31	29	30	38	8	26	-12	27	1	31	4	32	1
Endotracheal intubation, oral	141	161	140	156	16	151	-5	169	18	134	-35	167	33
EOA/EGA/EGTA	1	2	0	1	1	0	-1	1	1				
External Pacing								18	18	17	-1	12	-5
Fluid challenge	327	428	498	452	-46	568	116	502	-66	497	-5	469	-28
Foley catheter	0	0	0	0	0	0	0						
Glucose determination	2142	2531	2825	2776	-49	2717	-59	2978	261	3056	78	3232	176
Heparin lock	0	0	0	0	0	0	0						
Intraosseous infusion	1	8	1	6	5	1	-5	1	0	14	13	20	6
MAST	8	9	0	2	2	0	-2						
Naso-gastic tube	0	0	0	0	0	0	0						
Needle thoracostomy	0	2	1	0	-1	2	2					1	1
Other ALS Treatment	9	127	165	26	-139	16	-10	303	287	391	88	271	-120
Peripheral IV	2592	4005	4247	4907	660	5179	272	5629	450	5929	300	5895	-34
Plural Decompression								2	2				
Procainamide monitoring	0	0	0	0	0	0	0						
Pulse oximetry	1507	4165	5688	4581	-1107	4657	76	4712	55	4658	-54	4235	-423
Removal of foreign body	5	4	3	9	6	10	1	1	-9	1	0	1	0
Saline lock	58	200	293	324	31	325	1	349	24	355	6	266	-89
Vagal maneuver	8	28	22	19	-3	25	6	38	13	25	-13	20	-5
	7340	14997	19361	19838	477	20350	512	21932	1582	22793	861	22176	-617

Procedure counts = number of times procedure was attempted

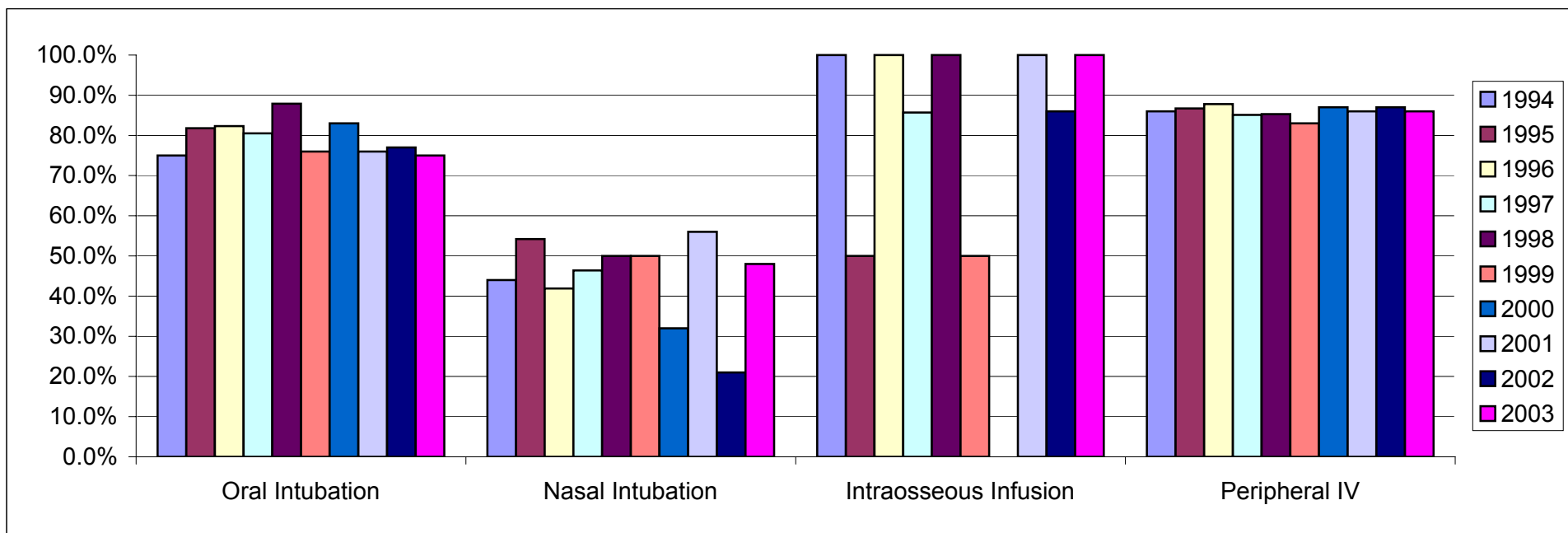
Successful Procedures

From January 1, 2003 to December 31, 2003

	1994	1995	1996	1997	1998	1999	2000			2001			2002			2003			Standard*
	Rate	Rate	Rate	Rate	Rate	Rate	Att	Suc	Rate	Att	Suc	Rate	Att	Suc	Rate	Att	Suc	Rate	
Oral Intubation	75%	82%	82%	85%	88%	76%	127	105	83%	152	115	76%	110	85	77%	147	110	75%	
Adult Oral Intubation							125	104	83%	148	112	76%	103	81	79%	146	109	75%	86.00%
Pedi Oral Intubation							2	1	50%	4	3	75%	7	4	57%	1	1	100%	91.60%
Nasal Intubation	44%	54%	42%	46%	50%	50%	22	7	32%	27	15	56%	29	6	21%	31	15	48%	
EOA/EGA/EGTA			100%	100%		50%				1	0	0%							
IO	100%	50%	100%	86%	100%	50%	1	0	0%	1	1	100%	14	12	86%	20	20	100%	
Peripheral IV	86%	87%	88%	85%	85%	83%	5273	4604	87%	5390	4662	86%	5722	4966	87%	5688	4874	86%	81.00%

*Standard researched by Mountain Valley EMS Region, 2000. Details available at EMS Office.

Attempts are counted per patient



Transport

From January 1, 2003 to December 31, 2003

Transport Provider	1995	1996	1997	1998	1999	2000			2001			2002			2003		
	Transport	Transport	Transport	Transport	Transport	Level of Care		Transport	Level of Care		Transport	Level of Care		Transport	Level of Care		Transport
						ALS	BLS		ALS	BLS		ALS	BLS		ALS	BLS	
NFPD	1776	1841	1865	1776	1925	1201	837	2038	1417	813	2230	1470	641	2111	1529	579	2108
Percent	30.2%	24.0%	22.5%	20.8%	20.2%	58.9%	41.1%	20.8%	63.5%	36.5%	21.0%	69.6%	30.4%	22.2%	72.5%	27.5%	22.6%
SRFD	1433	1617	2248	2258	2479	2034	663	2697	2046	549	2595	1884	357	2241	1926	298	2224
Percent	24.4%	21.1%	27.1%	26.5%	26.0%	75.4%	24.6%	27.5%	78.8%	21.2%	24.4%	84.1%	15.9%	23.5%	86.6%	13.4%	23.8%
RVPA	897	969	906	906	888	798	185	983	905	79	984	931	139	1070	792	109	901
Percent	15.3%	12.7%	10.9%	10.6%	9.3%	81.2%	18.8%	10.0%	92.0%	8.0%	9.3%	87.0%	13.0%	11.2%	87.9%	12.1%	9.6%
SMEMPS	1432	1477	1530	1678	1824	1448	531	1979	1605	745	2350	1447	485	1932	1347	477	1824
Percent	24.4%	19.3%	18.4%	19.7%	19.1%	73.2%	26.8%	20.2%	68.3%	31.7%	22.1%	74.9%	25.1%	20.3%	73.8%	26.2%	19.5%
MCFD	287	286	289	339	407	302	149	451	349	155	504	397	124	521	336	107	443
Percent	4.9%	3.7%	3.5%	4.0%	4.3%	67.0%	33.0%	4.6%	69.2%	30.8%	4.7%	76.2%	23.8%	5.5%	75.8%	24.2%	4.7%
CMFD	0	0	0	382	412	311	124	435	340	149	489	376	138	514	322	113	435
Percent				4.5%	4.3%	71.5%	28.5%	4.4%	69.5%	30.5%	4.6%	73.2%	26.8%	5.4%	74.0%	26.0%	4.7%
Other	51	1467	1467	1194	1600	198	1009	1207	133	1346	1479	97	1032	1129	74	1328	1402
Percent	0.9%	19.2%	17.7%	14.0%	16.8%	16.4%	83.6%	12.3%	9.0%	91.0%	13.9%	8.6%	91.4%	11.9%	5.3%	94.7%	15.0%
TOTAL	5,876	7,657	8,305	8,533	9,535	6,292	3,498	9,790	6,795	3,836	10,631	6,602	2,916	9,518	6,326	3,011	9,337
PERCENT						64.3%	35.7%		63.9%	36.1%		69.4%	30.6%		67.8%	32.2%	

From January 1, 2003 to December 31, 2003

Hospital	Transport Provider	Jan	Feb	Mar	Apr	May	Jun	Jul	Aug	Sep	Oct	Nov	Dec	Total
Hospital Total:			1	1							1			3
<i>Kaiser Hospital, Santa Rosa</i>														
	NFPD								1			1		2
Hospital Total:									1			1		2
<i>Kaiser Hospital, Terra Linda</i>														
	SRFD	73	63	64	45	74	56	61	67	50	60	57	78	748
	RVPA	10	14	12	6	10	13	15	14	23	6	16	20	159
	SMEMPS	16	23	26	27	28	32	26	48	36	30	24	35	351
	MCFD	13	11	11	7	14	14	14	15	9	13	10	6	137
	AMR-Marin	2			1		1		1		2		2	9
	RELS-Marin	9	10	8	6	7	7	7	12	9	6	5	1	87
	CMFD	5	3	14	7	5	10	9	6	6	9	9	9	92
	St Joseph	19	20	21	23	21	21	29	26	23	16	17	17	253
	NFPD	45	54	62	58	59	53	42	45	57	53	49	55	632
Hospital Total:		192	198	218	180	218	207	203	234	213	195	187	223	2468
<i>Marin General Hospital</i>														
	AMR-Marin			1			2	4	7	2		1	2	19
	NFPD	17	24	19	30	12	21	20	24	37	23	13	22	262
	SRFD	139	110	119	111	121	113	101	98	127	124	103	132	1398
	RVPA	61	61	72	43	42	63	69	47	65	66	72	68	729
	SMEMPS	97	110	112	113	121	146	113	136	124	134	104	136	1446
	RELS-Marin	22	26	20	14	28	28	25	28	30	22	15	11	269
	CMFD	34	21	19	16	29	30	32	42	33	29	18	37	340
	St Joseph	41	53	56	62	71	52	66	70	49	67	42	43	672
	Stinson Beach				3	2							2	7
	MCFD	11	21	11	22	33	29	22	22	25	19	22	16	253
Hospital Total:		422	426	429	414	459	484	452	474	492	484	390	469	5395

From January 1, 2003 to December 31, 2003

Hospital	Transport Provider	Jan	Feb	Mar	Apr	May	Jun	Jul	Aug	Sep	Oct	Nov	Dec	Total
<i>Novato Community Hospital</i>														
	CMFD	2										1		3
	St Joseph	4	5	3	6	7	6	4	3	5	8	6	6	63
	RELS-Marin	2	1			2	2	1	1	1	4	2	3	19
	AMR-Marin										1	1		2
	SMEMPS											1		1
	RVPA	3	2	2		2	1	1				1		12
	SRFD	8	8	5	4	8	5	8	3	2	5	8	6	70
	NFPD	104	81	116	100	95	89	94	88	110	108	104	121	1210
	MCFD			2	1	2	3	1	1	1	2	3	1	17
	Hospital Total:	123	97	128	111	116	106	109	96	119	128	127	137	1397
<i>Palm Drive Hospital</i>														
	MCFD			1					1					2
	Hospital Total:			1					1					2
<i>Petaluma Valley Hospital</i>														
	MCFD	1	1	2	3	4		3	5	2	2	2		25
	NFPD		1											1
	SRFD								1					1
	Hospital Total:	1	2	2	3	4		3	6	2	2	2		27
<i>San Francisco General Hospital</i>														
	SMEMPS		1									1		2
	St Joseph					1								1
	Hospital Total:		1			1						1		3
<i>Santa Rosa Memorial Hospital</i>														
	MCFD							1	1					2
	Hospital Total:							1	1					2

From January 1, 2003 to December 31, 2003

Hospital	Transport Provider	Jan	Feb	Mar	Apr	May	Jun	Jul	Aug	Sep	Oct	Nov	Dec	Total
St. Mary's Medical Center														
	SMEMPS							1				1		2
	Hospital Total:							1				1		2
Sutter Medical Center of Santa Rosa														
	MCFD										1			1
	Hospital Total:										1			1
U.C.S.F. Medical Center														
	Stinson Beach					1								1
	SMEMPS	2		1				1		1	1			6
	AMR-Marin												1	1
	RELS-Marin										1			1
	St Joseph												1	1
	Hospital Total:	2		1	1			1		1	2		2	10
	Grand Total:	742	730	783	713	800	800	777	813	829	815	712	832	9346

Gender by Age Report (Grouped by Provider)

From January 1, 2003 to December 31, 2003

NOTE: Read gender percentages across

Provider Agency	Gender	Patient Age									Total	
		Unknown	< 1	1-4	5-12	13-15	16-20	21-40	41-55	56-70		> 70
AMR-Marin												
	Female	0	0	0	0	0	3	1	6	0	7	17
							17.65%	5.88%	35.29%		41.18%	0.13%
	Male	0	0	0	2	1	1	1	4	2	3	14
					14.29%	7.14%	7.14%	7.14%	28.57%	14.29%	21.43%	0.11%
		0	0	0	2	1	4	2	10	2	10	31
CMFD												
	Female	0	4	7	3	3	20	55	59	47	194	392
			1.02%	1.79%	0.77%	0.77%	5.10%	14.03%	15.05%	11.99%	49.49%	2.97%
	Male	1	1	11	7	4	10	40	64	40	110	288
		0.35%	0.35%	3.82%	2.43%	1.39%	3.47%	13.89%	22.22%	13.89%	38.19%	2.18%
	Unknown	0	0	1	0	0	0	0	0	0	0	1
				100.00%								0.01%
		1	5	19	10	7	30	95	123	87	304	681
Coastal												
	Female	0	0	0	0	1	0	0	0	0	0	1
						100.00%						0.01%
		0	0	0	0	1	0	0	0	0	0	1
MCFD												
	Female	0	3	10	17	9	28	80	87	65	124	423
			0.71%	2.36%	4.02%	2.13%	6.62%	18.91%	20.57%	15.37%	29.31%	3.20%
	Male	0	1	7	31	20	40	103	97	67	79	445
			0.22%	1.57%	6.97%	4.49%	8.99%	23.15%	21.80%	15.06%	17.75%	3.37%

Gender by Age Report (Grouped by Provider)

From January 1, 2003 to December 31, 2003

NOTE: Read gender percentages across

Provider Agency	Gender	Patient Age									Total	
		Unknown	< 1	1-4	5-12	13-15	16-20	21-40	41-55	56-70		> 70
		0	4	17	48	29	68	183	184	132	203	868
NFPD												
	Female	1 0.06%	17 1.04%	21 1.29%	30 1.84%	29 1.78%	77 4.72%	264 16.19%	251 15.39%	215 13.18%	725 44.45%	1631 12.34%
	Male	2 0.15%	23 1.71%	41 3.06%	47 3.50%	33 2.46%	83 6.18%	255 19.00%	264 19.67%	194 14.46%	400 29.81%	1342 10.15%
	Unknown	0	0	1 100.00%	0	0	0	0	0	0	0	1 0.01%
		3	40	63	77	62	160	519	515	409	1125	2974
Other												
	Male	0	0	0	1 33.33%	0	1 33.33%	0	1 33.33%	0	0	3 0.02%
		0	0	0	1	0	1	0	1	0	0	3
RELS-Marín												
	Female	0	1 0.41%	2 0.82%	4 1.64%	6 2.46%	4 1.64%	39 15.98%	38 15.57%	40 16.39%	110 45.08%	244 1.85%
	Male	0	1 0.44%	2 0.89%	7 3.11%	7 3.11%	9 4.00%	52 23.11%	67 29.78%	24 10.67%	56 24.89%	225 1.70%
		0	2	4	11	13	13	91	105	64	166	469
RVPA												
	Female	1 0.11%	5 0.55%	14 1.53%	13 1.42%	16 1.75%	31 3.38%	116 12.66%	137 14.96%	153 16.70%	429 46.83%	916 6.93%
	Male	0	7 0.84%	31 3.71%	24 2.87%	25 2.99%	51 6.11%	117 14.01%	180 21.56%	110 13.17%	290 34.73%	835 6.32%

Gender by Age Report (Grouped by Provider)

From January 1, 2003 to December 31, 2003

NOTE: Read gender percentages across

Provider Agency	Gender	Patient Age									Total	
		Unknown	< 1	1-4	5-12	13-15	16-20	21-40	41-55	56-70		> 70
		1	12	45	37	41	82	233	317	263	719	1751

SMEMPS

Female	4 0.30%	15 1.13%	22 1.65%	32 2.40%	13 0.98%	43 3.23%	195 14.63%	239 17.93%	217 16.28%	553 41.49%	1333 10.08%
Male	5 0.42%	6 0.50%	53 4.44%	55 4.60%	24 2.01%	39 3.26%	244 20.42%	226 18.91%	208 17.41%	335 28.03%	1195 9.04%
	9	21	75	87	37	82	439	465	425	888	2528

SRFD

Female	0	9 0.59%	22 1.44%	28 1.83%	20 1.31%	45 2.95%	201 13.15%	238 15.58%	197 12.89%	768 50.26%	1528 11.56%
Male	1 0.08%	13 0.98%	44 3.32%	24 1.81%	13 0.98%	47 3.54%	245 18.46%	285 21.48%	211 15.90%	444 33.46%	1327 10.04%
	1	22	66	52	33	92	446	523	408	1212	2855

St Joseph

Female	0	1 0.18%	4 0.71%	9 1.59%	8 1.41%	22 3.89%	82 14.49%	102 18.02%	79 13.96%	259 45.76%	566 4.28%
Male	0	2 0.46%	5 1.15%	14 3.23%	5 1.15%	17 3.92%	108 24.88%	137 31.57%	52 11.98%	94 21.66%	434 3.28%
	0	3	9	23	13	39	190	239	131	353	1000

Stinson Beach

Female	0	0	0	2 6.90%	1 3.45%	1 3.45%	3 10.34%	12 41.38%	2 6.90%	8 27.59%	29 0.22%
Male	0	1 3.33%	3 10.00%	1 3.33%	1 3.33%	2 6.67%	3 10.00%	10 33.33%	4 13.33%	5 16.67%	30 0.23%

Gender by Age Report (Grouped by Provider)

From January 1, 2003 to December 31, 2003

NOTE: Read gender percentages across

Provider Agency	Patient Age										
Gender	Unknown	< 1	1-4	5-12	13-15	16-20	21-40	41-55	56-70	> 70	Total
	0	1	3	3	2	3	6	22	6	13	59
Grand Total:	15	110	301	351	239	574	2204	2504	1927	4993	13220
Read Grand Total percentages across:	0.11%	0.83%	2.28%	2.66%	1.81%	4.34%	16.67%	18.94%	14.58%	37.77%	

Type of Patient by Receiving Hospital Report

From January 1, 2003 to December 31, 2003

Receiving Hospital	Type of Patient (See Footnote for Code Description)																								Total	
	101	102	103	104	105	106	107	108	109	110	111	112	113	114	115	116	118	119	120	121	122	199	200	300		400
California Pacific Medical Center	1		1								2				1		3			1		1			2	12
Children's Hospital Oakland				1																					6	7
Doctors Hospital Pinole				1		1											1									3
Eden Valley Hospital																									1	1
John Muir Medical Center																						1			10	11
Kaiser Hospital, San Francisco						1											1								1	3
Kaiser Hospital, Santa Rosa																									2	2
Kaiser Hospital, Terra Linda	147	12	31	195	10	209	45	90	26	30	33	10		7	164	20	215	66	1	253	31	369	9	19	476	2468
Marin General Hospital	244	12	55	421	42	382	72	132	36	121	55	11		12	357	57	403	197	15	427	70	705	40	66	1463	5395
Novato Community Hospital	94	8	9	195	17	97	20	26	14	23	18	5	1	5	89	19	124	53	2	126	15	220	1	7	209	1397
Palm Drive Hospital																									2	2
Petaluma Valley Hospital	5					3					1		1		1		3			2	1	2			8	27
San Francisco General Hospital	1																1					1				3
Santa Rosa Memorial Hospital																									2	2
St. Mary's Medical Center																1	1									2
Sutter Medical Center of Santa Rosa																									1	1
U.C.S.F. Medical Center		1				1									2		1	1		1		3				10
Total:	492	33	96	813	69	694	137	248	76	174	109	26	2	24	614	97	753	317	18	810	117	1302	50	92	2183	9346

Footnote - Description of Patient Type Codes

101 Abdominal Pain	108 CVA/Stroke/TIA	115 Pain, Non-Specific	199 Other Illness
102 Airway Obstruction	109 Diabetes Complication	116 Poisoning/OD	200 Obstetric
103 Allergic Reaction	110 Drug/Alcohol Intoxication	118 Respiratory Distress	300 Psychiatric
104 Altered Level of Consciousness	111 Hypotension	119 Seizure	400 Trauma/Traumatic Shock
105 Cardiac Arrest	112 Hypertension	120 Unconscious, Cause Unknown	
106 Chest Discomfort, Cardiac	113 Hypothermia/Frostbite	121 Syncope	
107 Chest Discomfort, Non-Cardiac	114 Heat Illness	122 Cardiac Dysrhythmia	

Mechanism of Injury by Receiving Hospital Report

From January 1, 2003 to December 31, 2003

Receiving Hospital	Mechanism of Injury (See Footnote for Description of Codes)																					Total	
	11	12	13	14	15	21	31	32	33	41	51	61	62	63	64	65	71	81	91	97	98		99
California Pacific Medical Center			2																				2
Children's Hospital Oakland											5								1				6
Eden Valley Hospital											1												1
John Muir Medical Center	8	1									1									1			11
Kaiser Hospital, San Francisco																		1					1
Kaiser Hospital, Santa Rosa	1	1																					2
Kaiser Hospital, Terra Linda	150	4	11	1		12	1	1	12		287			1	1	1	1	3	4	12	3	15	520
Marin General Hospital	451	37	114	1	1	32	3	13	59		667	4	5		2		5	9	15	40	16	46	1520
Novato Community Hospital	34	2	6			1		3	8		177						1	2	6	7	3	18	268
Palm Drive Hospital	1	1																					2
Petaluma Valley Hospital	2	1		1							5									1			10
Santa Rosa Memorial Hospital	1															1							2
Sutter Medical Center of Santa Rosa			1																				1
Total:	648	47	134	3	1	45	4	17	79		1143	4	5	1	3	2	7	15	26	61	22	79	2346

Footnote - Description of Mechanism of Injury Codes

11 Motor Vehicle Crash
 12 Motorcycle Crash
 13 Bicycle Crash
 14 Watercraft
 15 Aircraft
 21 Pedestrian vs Vehicle

31 Gunshot
 32 Stabbing
 33 Other Assault
 41 Near Drowning/Drowning
 51 Fall
 61 Smoke/Fumes

62 Fire
 63 Explosion
 64 Hazardous Material
 65 Electrical
 71 Animal
 81 Machinery

91 Recreation/Sport
 97 Other Mechanism, Blunt
 98 Other Mechanism, Penetrating
 99 Other Mechanism, Not Specified

Type of Patient by Provider Agency Report

From January 1, 2003 to December 31, 2003

Provider Agency	Type of Patient (See Footnote for Code Description)																								Total	
	101	102	103	104	105	106	107	108	109	110	111	112	113	114	115	116	118	119	120	121	122	199	200	300		400
AMR-Marin	2		1							2					3		1	1				9		1	11	31
CMFD	21		5	38	27	42	6	22	11	6	8			1	17	7	39	20	1	70	10	101	6	10	211	679
Coastal																1										1
MCFD	36	1	32	36	15	51	17	8	9	10	3	1	4		72	3	55	19		48	20	123	4	8	278	853
NFPD	142	23	18	274	78	183	35	57	34	36	31	11		6	192	23	212	88	1	194	15	478	13	26	725	2895
Other																1									1	2
RELS-Marin	18	2	4	17	2	11	8	2		16	2			1	135	3	7	4	2	8	3	94	1	9	120	469
RVPA	76	8	30	149	49	129	22	46	15	29	14			6	97	23	144	53	7	180	31	261	11	30	335	1745
SMEMPS	123	18	27	142	45	164	27	54	43	41	9	6	6	7	243	23	177	70	6	218	32	389	3	27	559	2459
SRFD	128	11	30	306	58	230	61	95	44	54	50	8		7	54	36	283	138	5	294	38	432	18	23	448	2851
St Joseph	39	7	5	12		2	7	3	1	46				2	92		12	14	1			277	1	23	456	1000
Stinson Beach	3		1	4		5		1					1	1	10		1	1	1	3		14	1	1	11	59
Total:	588	70	153	978	274	817	183	288	157	240	117	26	11	31	915	120	931	408	24	1015	149	2178	58	158	3155	13044

Footnote - Description of Patient Type Codes

101 Abdominal Pain	108 CVA/Stroke/TIA	115 Pain, Non-Specific	199 Other Illness
102 Airway Obstruction	109 Diabetes Complication	116 Poisoning/OD	200 Obstetric
103 Allergic Reaction	110 Drug/Alcohol Intoxication	118 Respiratory Distress	300 Psychiatric
104 Altered Level of Consciousness	111 Hypotension	119 Seizure	400 Trauma/Traumatic Shock
105 Cardiac Arrest	112 Hypertension	120 Unconscious, Cause Unknown	
106 Chest Discomfort, Cardiac	113 Hypothermia/Frostbite	121 Syncope	
107 Chest Discomfort, Non-Cardiac	114 Heat Illness	122 Cardiac Dysrhythmia	

Mechanism of Injury Report (Age > 65)

From January 1, 2003 to December 31, 2003

Provider Agency	Mechanism of Injury (See Footnote for Description of Codes)																					Total	
	11	12	13	14	15	21	31	32	33	41	51	61	62	63	64	65	71	81	91	97	98		99
AMR-Marin											7												7
CMFD	2		1			2					53									1		1	60
MCFD	4	2	2								34						1			1		2	46
NFPD	33	2				1	2		1		208									2	1	5	255
RELS-Marin	7					1					54									1	1	2	66
RVPA	10					3	1				92									2		2	110
SMEMPS	23		1			1		1			135							1		1		2	165
SRFD	20	1				2		1			79									1			104
St Joseph	9								2		164				1					2	1	6	185
Stinson Beach											2												2
Total:	108	5	4			10	3	2	3		828				1		1	1		11	3	20	1000

Footnote - Description of Mechanism of Injury Codes

- | | | | |
|--------------------------|---------------------------|-----------------------|-----------------------------------|
| 11 Motor Vehicle Crash | 31 Gunshot | 62 Fire | 91 Recreation/Sport |
| 12 Motorcycle Crash | 32 Stabbing | 63 Explosion | 97 Other Mechanism, Blunt |
| 13 Bicycle Crash | 33 Other Assault | 64 Hazardous Material | 98 Other Mechanism, Penetrating |
| 14 Watercraft | 41 Near Drowning/Drowning | 65 Electrical | 99 Other Mechanism, Not Specified |
| 15 Aircraft | 51 Fall | 71 Animal | |
| 21 Pedestrian vs Vehicle | 61 Smoke/Fumes | 81 Machinery | |

Protocol Followed by Age Report

From January 1, 2003 to December 31, 2003

Note: Read Percentages Down

Protocol	Patient Age										Total
	Unknown	< 1	1-4	5-12	13-15	16-20	21-40	41-55	56-70	> 70	
Abdominal Pain	1 25.00%	0	1 0.65%	3 1.96%	7 6.09%	9 3.09%	96 7.78%	97 6.33%	67 5.00%	186 5.26%	467 5.56%
Acute Pulmonary Edema	0	0	0	0	0	0	2 0.16%	4 0.26%	21 1.57%	112 3.17%	139 1.66%
Acute Respiratory Distress - Other	0	3 8.11%	3 1.96%	4 2.61%	3 2.61%	7 2.41%	23 1.86%	45 2.94%	80 5.97%	319 9.02%	487 5.80%
Adult Pain Management	0	0	1 0.65%	3 1.96%	8 6.96%	13 4.47%	74 6.00%	95 6.20%	55 4.10%	150 4.24%	399 4.75%
Airway Obstruction	0	1 2.70%	3 1.96%	0	1 0.87%	0	0	2 0.13%	5 0.37%	11 0.31%	23 0.27%
Allergic Reaction - Mild	0	0	2 1.31%	3 1.96%	4 3.48%	5 1.72%	18 1.46%	23 1.50%	14 1.04%	3 0.08%	72 0.86%
Allergic Reactions - Mod/Severe, Anaphylaxis	0	2 5.41%	1 0.65%	3 1.96%	0	4 1.37%	8 0.65%	6 0.39%	9 0.67%	3 0.08%	36 0.43%
ALOC/Coma	0	1 2.70%	8 5.23%	8 5.23%	12 10.43%	28 9.62%	155 12.56%	280 18.26%	226 16.85%	683 19.32%	1401 16.69%
ALS Assessment	0	3 8.11%	1 0.65%	0	1 0.87%	2 0.69%	20 1.62%	28 1.83%	33 2.46%	90 2.55%	178 2.12%
Asthma - Mild/Moderate	0	0	5 3.27%	2 1.31%	6 5.22%	5 1.72%	14 1.13%	21 1.37%	15 1.12%	26 0.74%	94 1.12%
Asthma - Severe	0	0	0	0	1 0.87%	0	3 0.24%	2 0.13%	4 0.30%	2 0.06%	12 0.14%
Burns	0	0	1 0.65%	2 1.31%	0	1 0.34%	5 0.41%	2 0.13%	1 0.07%	0	12 0.14%
Cardiopulmonary Arrest - Asystole	0	0	0	0	0	1 0.34%	10 0.81%	24 1.57%	21 1.57%	95 2.69%	151 1.80%

Protocol Followed by Age Report

From January 1, 2003 to December 31, 2003

Note: Read Percentages Down

Protocol	Patient Age										Total
	Unknown	< 1	1-4	5-12	13-15	16-20	21-40	41-55	56-70	> 70	
Cardiopulmonary Arrest - PEA	0	0	0	0	0	0	1	8	11	22	42
							0.08%	0.52%	0.82%	0.62%	0.50%
Cardiopulmonary Arrest - VF/VT	0	0	1	0	0	3	1	6	11	20	42
		0.65%				1.03%	0.08%	0.39%	0.82%	0.57%	0.50%
Chest Pain	0	1	0	0	0	1	36	156	206	411	811
	2.70%					0.34%	2.92%	10.18%	15.36%	11.63%	9.66%
Chest Pain, Unlikely to be Cardiac	0	0	1	3	1	7	30	49	32	44	167
		0.65%	1.96%	0.87%	2.41%	2.43%	3.20%	2.39%	1.24%	1.99%	
Chronic Obstructive Pulmonary Disease	0	0	0	0	0	0	0	5	27	89	121
							0.33%	2.01%	2.52%	1.44%	
Croup/Epiglottitis	0	1	2	0	0	0	0	0	0	0	3
	2.70%	1.31%									0.04%
Crush Injury	0	0	0	0	0	0	1	1	0	0	2
							0.08%	0.07%			0.02%
CVA (Stroke)	0	0	0	0	0	0	2	4	9	40	55
							0.16%	0.26%	0.67%	1.13%	0.66%
Drowning/Near Drowning	0	0	0	0	0	0	0	1	1	0	2
							0.07%	0.07%			0.02%
Dysrhythmias - Bradycardia	0	0	0	0	0	0	0	6	10	39	55
							0.39%	0.75%	1.10%	0.66%	
Dysrhythmias - Sust. V.T., pulse present	0	0	0	0	0	0	0	3	4	9	16
							0.20%	0.30%	0.25%	0.19%	
Dysrhythmias - SVT	0	0	0	0	1	0	6	22	23	50	102
				0.87%			0.49%	1.44%	1.72%	1.41%	1.21%
Dysrhythmias - Ventricular Ectopy	0	0	0	0	0	0	0	4	6	11	21
							0.26%	0.45%	0.31%	0.25%	
Envenomation	0	0	0	0	0	0	3	1	1	0	5
							0.24%	0.07%	0.07%		0.06%

Protocol Followed by Age Report

From January 1, 2003 to December 31, 2003

Note: Read Percentages Down

Protocol	Patient Age										Total
	Unknown	< 1	1-4	5-12	13-15	16-20	21-40	41-55	56-70	> 70	
Gastrointestinal Bleeding	0	0	0	0	0	0	11	7	17	69	104
							0.89%	0.46%	1.27%	1.95%	1.24%
Heat Illness - Mild	0	1	1	0	1	0	4	1	4	4	16
		2.70%	0.65%		0.87%		0.32%	0.07%	0.30%	0.11%	0.19%
Heat Illness/Hyperthermia	0	0	0	0	0	0	1	0	1	4	6
							0.08%		0.07%	0.11%	0.07%
Hypothermia/Frostbite	0	0	0	1	3	0	4	1	0	2	11
				0.65%	2.61%		0.32%	0.07%		0.06%	0.13%
Imminent Delivery (normal/with complications)	0	0	0	0	0	2	15	1	0	0	18
						0.69%	1.22%	0.07%			0.21%
Major Head Trauma	0	0	0	1	1	4	7	9	3	15	40
				0.65%	0.87%	1.37%	0.57%	0.59%	0.22%	0.42%	0.48%
Major Traumatic Injury	3	4	20	59	34	126	377	263	158	315	1359
	75.00%	10.81%	13.07%	38.56%	29.57%	43.30%	30.55%	17.16%	11.78%	8.91%	16.19%
N/A	0	0	0	0	1	0	5	2	1	4	13
					0.87%		0.41%	0.13%	0.07%	0.11%	0.15%
Non-Traumatic Shock	0	1	0	0	1	0	8	20	23	89	142
		2.70%			0.87%		0.65%	1.30%	1.72%	2.52%	1.69%
Pediatric Allergic Reaction	0	3	1	1	0	0	0	0	0	0	5
		8.11%	0.65%	0.65%							0.06%
Pediatric Altered Level of Consciousness	0	0	8	1	2	0	0	0	0	0	11
			5.23%	0.65%	1.74%						0.13%
Pediatric Burns	0	0	2	1	0	0	0	0	0	0	3
			1.31%	0.65%							0.04%
Pediatric Cardiac Arrest	0	0	0	0	0	0	0	0	0	1	1
										0.03%	0.01%

Protocol Followed by Age Report

From January 1, 2003 to December 31, 2003

Note: Read Percentages Down

Protocol	Patient Age										Total
	Unknown	< 1	1-4	5-12	13-15	16-20	21-40	41-55	56-70	> 70	
Pediatric Respiratory Distress	0	7	11	7	1	0	0	1	0	0	27
		18.92%	7.19%	4.58%	0.87%			0.07%			0.32%
Pediatric Seizure	0	4	32	2	0	0	0	0	0	1	39
		10.81%	20.92%	1.31%						0.03%	0.46%
Pediatric Shock	0	0	0	1	0	0	0	0	0	0	1
				0.65%							0.01%
Pediatric Toxic Exposures	0	0	0	1	0	0	0	0	0	0	1
				0.65%							0.01%
Pediatric Trauma	0	3	18	30	7	1	0	0	0	0	59
		8.11%	11.76%	19.61%	6.09%	0.34%					0.70%
Poisons/Drugs	0	0	1	1	7	18	63	79	14	6	189
			0.65%	0.65%	6.09%	6.19%	5.11%	5.15%	1.04%	0.17%	2.25%
Respiratory Arrest	0	0	0	0	0	0	1	2	0	5	8
							0.08%	0.13%		0.14%	0.10%
Seizures	0	2	28	12	3	15	98	82	34	18	292
		5.41%	18.30%	7.84%	2.61%	5.15%	7.94%	5.35%	2.54%	0.51%	3.48%
Severe Pre-Eclampsia/Eclampsia	0	0	0	0	0	0	0	1	0	0	1
								0.07%			0.01%
Syncope/Near Syncope	0	0	1	4	9	38	112	169	192	580	1105
			0.65%	2.61%	7.83%	13.06%	9.08%	11.02%	14.32%	16.41%	13.16%
Toxic Gas Inhalation	0	0	0	0	0	0	1	0	2	4	7
							0.08%		0.15%	0.11%	0.08%
Vaginal Hemorrhage with/without shock	0	0	0	0	0	1	19	0	0	3	23
						0.34%	1.54%			0.08%	0.27%
Grand Total:	4	37	153	153	115	291	1234	1533	1341	3535	8396
Read Grand Total Percentages Across:	0.05%	0.44%	1.82%	1.82%	1.37%	3.47%	14.70%	18.26%	15.97%	42.10%	

Mechanism of Injury by Age Report

From January 1, 2003 to December 31, 2003

Note: Read Percentages Down

Mechanism of Injury	Patient Age										Total
	Unknown	< 1	1-4	5-12	13-15	16-20	21-40	41-55	56-70	> 70	
Aircraft	0	0	0	0	0	0	0	2	0	0	2
								0.32%			0.06%
Animal	0	0	1	0	2	0	3	5	2	1	14
			1.59%		1.87%		0.38%	0.79%	0.55%	0.11%	0.42%
Bicycle crash	2	0	0	28	8	10	74	49	27	0	198
	33.33%			15.73%	7.48%	3.58%	9.43%	7.75%	7.46%		5.94%
Electrical	0	0	0	2	0	0	1	2	1	0	6
				1.12%			0.13%	0.32%	0.28%		0.18%
Explosion	0	0	0	1	0	0	0	1	0	0	2
				0.56%				0.16%			0.06%
Fall	1	13	38	73	34	32	131	187	177	782	1468
	16.67%	81.25%	60.32%	41.01%	31.78%	11.47%	16.69%	29.59%	48.90%	86.12%	44.00%
Fire	0	0	0	0	0	1	3	2	1	0	7
						0.36%	0.38%	0.32%	0.28%		0.21%
Gunshot	0	0	0	0	0	0	1	5	1	2	9
							0.13%	0.79%	0.28%	0.22%	0.27%
Hazardous Material	0	0	0	0	0	0	0	2	1	1	4
								0.32%	0.28%	0.11%	0.12%
Machinery	0	0	3	2	0	2	8	5	0	1	21
			4.76%	1.12%		0.72%	1.02%	0.79%		0.11%	0.63%
Motor Vehicle crash	3	2	8	35	25	179	360	253	102	79	1046
	50.00%	12.50%	12.70%	19.66%	23.36%	64.16%	45.86%	40.03%	28.18%	8.70%	31.35%
Motorcycle crash	0	0	0	0	0	2	40	22	11	1	76
						0.72%	5.10%	3.48%	3.04%	0.11%	2.28%
Near drowning/drowning	0	0	0	1	0	0	0	0	0	0	1
				0.56%							0.03%
Other Assault	0	0	0	1	11	23	62	28	5	3	133
				0.56%	10.28%	8.24%	7.90%	4.43%	1.38%	0.33%	3.99%

Mechanism of Injury by Age Report

From January 1, 2003 to December 31, 2003

Note: Read Percentages Down

Mechanism of Injury	Patient Age										Total
	Unknown	< 1	1-4	5-12	13-15	16-20	21-40	41-55	56-70	> 70	
Other mechanism, blunt	0	0	2	11	7	12	22	20	7	11	92
			3.17%	6.18%	6.54%	4.30%	2.80%	3.16%	1.93%	1.21%	2.76%
Other mechanism, not specified	0	1	8	9	8	7	26	22	13	14	108
		6.25%	12.70%	5.06%	7.48%	2.51%	3.31%	3.48%	3.59%	1.54%	3.24%
Other mechanism, penetrating	0	0	1	3	1	1	15	4	3	2	30
			1.59%	1.69%	0.93%	0.36%	1.91%	0.63%	0.83%	0.22%	0.90%
Pedestrian vs vehicle	0	0	2	5	4	4	16	12	7	9	59
			3.17%	2.81%	3.74%	1.43%	2.04%	1.90%	1.93%	0.99%	1.77%
Recreation/Sport	0	0	0	7	7	4	9	3	3	0	33
				3.93%	6.54%	1.43%	1.15%	0.47%	0.83%		0.99%
Smoke/fumes	0	0	0	0	0	0	3	2	0	0	5
							0.38%	0.32%			0.15%
Stabbing	0	0	0	0	0	2	9	5	0	2	18
						0.72%	1.15%	0.79%		0.22%	0.54%
Watercraft	0	0	0	0	0	0	2	1	1	0	4
							0.25%	0.16%	0.28%		0.12%
Grand Total:	6	16	63	178	107	279	785	632	362	908	3336
Read Grand Total Percentages Across:	0.18%	0.48%	1.89%	5.34%	3.21%	8.36%	23.53%	18.94%	10.85%	27.22%	

Mechanism of Injury by Provider Agency Report

From January 1, 2003 to December 31, 2003

Provider Agency	Mechanism of Injury (See Footnote for Description of Codes)																					Total		
	11	12	13	14	15	21	31	32	33	41	51	61	62	63	64	65	71	81	91	97	98		99	
AMR-Marine	2								2		11													15
CMFD	53	2	9			2			6		82		1		1	4	1	3	1	5	3	7		180
MCFD	95	25	27	1		1			9		87					1	7	5	9	13	3	10		293
NFPD	344	13	17		1	15	3	7	45		358						1	2	7	23	4	33		873
Other	1																							1
RELS-Marine	46	2	5			1			8		89							1	5	7	5	9		178
RVPA	79	2	31			8	2		8		162	2		1					4	16		6		321
SMEMPS	136	15	76	2		5	2	5	19		276	1	1				2	6	2	14	6	16		584
SRFD	159	11	19		1	17	1	4	16		140		1	1		1		1	2	7	1	7		389
St Joseph	129	5	14			10		2	19		256	2	4		3		3	3	3	6	7	17		483
Stinson Beach	2	1		1			1		1	1	7										1	1	3	19
Total:	1046	76	198	4	2	59	9	18	133	1	1468	5	7	2	4	6	14	21	33	92	30	108		3336

Footnote - Description of Mechanism of Injury Codes

- | | | | |
|--------------------------|---------------------------|-----------------------|-----------------------------------|
| 11 Motor Vehicle Crash | 31 Gunshot | 62 Fire | 91 Recreation/Sport |
| 12 Motorcycle Crash | 32 Stabbing | 63 Explosion | 97 Other Mechanism, Blunt |
| 13 Bicycle Crash | 33 Other Assault | 64 Hazardous Material | 98 Other Mechanism, Penetrating |
| 14 Watercraft | 41 Near Drowning/Drowning | 65 Electrical | 99 Other Mechanism, Not Specified |
| 15 Aircraft | 51 Fall | 71 Animal | |
| 21 Pedestrian vs Vehicle | 61 Smoke/Fumes | 81 Machinery | |

Type of Patient by Age Report

From January 1, 2003 to December 31, 2003

NOTE: Read percentages down

Type of Patient	Patient Age										Total
	Unknown	< 1	1-4	5-12	13-15	16-20	21-40	41-55	56-70	> 70	
Abdominal pain	0	0	3	5	7	13	122	125	91	222	588
			1.02%	1.45%	3.03%	2.33%	5.62%	5.08%	4.79%	4.47%	4.51%
Airway obstruction	1	7	9	4	1	1	5	10	7	25	70
	7.69%	6.60%	3.05%	1.16%	0.43%	0.18%	0.23%	0.41%	0.37%	0.50%	0.54%
Allergic reaction	0	5	7	13	6	12	40	38	26	6	153
		4.72%	2.37%	3.77%	2.60%	2.15%	1.84%	1.54%	1.37%	0.12%	1.17%
Altered level of consciousness	0	1	10	5	8	24	118	207	140	465	978
		0.94%	3.39%	1.45%	3.46%	4.31%	5.43%	8.41%	7.38%	9.36%	7.50%
Cardiac Arrest	2	0	2	0	0	4	15	45	49	157	274
	15.38%		0.68%			0.72%	0.69%	1.83%	2.58%	3.16%	2.10%
Cardiac dysrhythmia	0	0	0	0	1	0	5	25	39	79	149
					0.43%		0.23%	1.02%	2.05%	1.59%	1.14%
Chest discomfort, cardiac	1	1	0	0	0	2	43	158	204	408	817
	7.69%	0.94%				0.36%	1.98%	6.42%	10.75%	8.22%	6.26%
Chest discomfort, non-cardiac	0	0	1	2	2	7	31	61	29	50	183
			0.34%	0.58%	0.87%	1.26%	1.43%	2.48%	1.53%	1.01%	1.40%
CVA/Stroke/TIA	0	0	0	1	0	0	6	19	50	212	288
				0.29%			0.28%	0.77%	2.63%	4.27%	2.21%
Diabetes complication	0	0	0	0	0	3	18	54	43	39	157
						0.54%	0.83%	2.19%	2.27%	0.79%	1.20%
Drug/alcohol intoxication	0	0	0	0	12	25	84	91	22	6	240
					5.19%	4.49%	3.87%	3.70%	1.16%	0.12%	1.84%
Heat illness	0	2	2	0	1	1	9	2	8	6	31
		1.89%	0.68%		0.43%	0.18%	0.41%	0.08%	0.42%	0.12%	0.24%
Hypertension	0	0	0	0	0	0	1	6	6	13	26
							0.05%	0.24%	0.32%	0.26%	0.20%
Hypotension/non-traumatic shock	0	0	0	1	0	0	8	14	15	79	117
				0.29%			0.37%	0.57%	0.79%	1.59%	0.90%

Type of Patient by Age Report

From January 1, 2003 to December 31, 2003

NOTE: Read percentages down

Type of Patient	Patient Age										Total
	Unknown	< 1	1-4	5-12	13-15	16-20	21-40	41-55	56-70	> 70	
Hypothermia/frostbite	0	0	0	2	3	0	4	1	0	1	11
				0.58%	1.30%		0.18%	0.04%		0.02%	0.08%
Obstetric	0	3	0	0	0	3	48	2	1	1	58
		2.83%				0.54%	2.21%	0.08%	0.05%	0.02%	0.44%
Other Illness	2	39	57	46	21	67	302	368	304	972	2178
	15.38%	36.79%	19.32%	13.33%	9.09%	12.03%	13.90%	14.95%	16.02%	19.57%	16.70%
Pain	1	2	8	31	23	37	175	206	116	316	915
	7.69%	1.89%	2.71%	8.99%	9.96%	6.64%	8.06%	8.37%	6.11%	6.36%	7.01%
Poisoning/OD	0	0	4	4	8	11	40	44	7	2	120
			1.36%	1.16%	3.46%	1.97%	1.84%	1.79%	0.37%	0.04%	0.92%
Psychiatric	0	0	0	3	2	11	40	49	26	27	158
				0.87%	0.87%	1.97%	1.84%	1.99%	1.37%	0.54%	1.21%
Respiratory distress	1	24	30	13	11	16	51	83	153	549	931
	7.69%	22.64%	10.17%	3.77%	4.76%	2.87%	2.35%	3.37%	8.06%	11.06%	7.14%
Seizure	0	7	81	20	4	18	129	92	38	19	408
		6.60%	27.46%	5.80%	1.73%	3.23%	5.94%	3.74%	2.00%	0.38%	3.13%
Syncope/near-Syncope	0	0	2	7	14	36	107	160	177	512	1015
			0.68%	2.03%	6.06%	6.46%	4.93%	6.50%	9.33%	10.31%	7.78%
Trauma/traumatic shock	5	15	79	188	107	266	767	596	343	789	3155
	38.46%	14.15%	26.78%	54.49%	46.32%	47.76%	35.31%	24.22%	18.07%	15.89%	24.19%
Unconscious, cause unknown	0	0	0	0	0	0	4	5	4	11	24
							0.18%	0.20%	0.21%	0.22%	0.18%
Grand Total:	13	106	295	345	231	557	2172	2461	1898	4966	13044
Read Grand Total percentages across:	0.10%	0.81%	2.26%	2.64%	1.77%	4.27%	16.65%	18.87%	14.55%	38.07%	

Medical vs Trauma by Age Group

From January 1, 2003 to December 31, 2003

Age Group	Medical	%	Trauma	%	Total
Undetermined	7	53.8%	6	46.2%	13
< 1	89	84.8%	16	15.2%	105
1-4	231	78.6%	63	21.4%	294
5-12	167	48.4%	178	51.6%	345
13-15	124	53.7%	107	46.3%	231
16-20	278	49.9%	279	50.1%	557
21-40	1,384	63.8%	784	36.2%	2,168
41-55	1,827	74.3%	632	25.7%	2,459
56-70	1,836	83.6%	361	16.4%	2,197
>70	4,054	81.7%	907	18.3%	4,961
Total	9,997	75.0%	3,333	25.0%	13,330
Percent	75.0%		25.0%		

