

Marin County Overview and
Planning Process
April 19, 2005

The Mental Health Services
Act (Prop. 63)

Purpose

- The stated purpose of the Mental Health Services Act is to “expand mental health services” in California.

MHSA Overview

- Plan Services that Provide:
 - Hope
 - Personal Empowerment
 - Respect
 - Social Connections
 - Self-Responsibility
 - Self-Determination

Current Situation in California

- One out of every two Americans who need mental health treatment do not receive it according to President's New Freedom Commission Report.
- The situation is even worse for ethnic and racial minorities.
- Estimates (Year 2000) are that over 1,000,000 adults, older adults, and children/youth living at or below 200% of poverty in California are in need of treatment.
- The public system provides an estimated 460,000 persons with services indicating we would need to more than double capacity to meet the needs of those who rely on public services.

MHSA Funding

- Is paid for by a 1% tax on taxable personal income over \$1 million.
- Is deposited into a Mental Health Services Fund (MHSF) in State Treasury
- Is used to expand, not supplant services; can *“not be used to supplant existing state or county funds utilized to provide mental health services.”*

Nine Categories of Expenditures

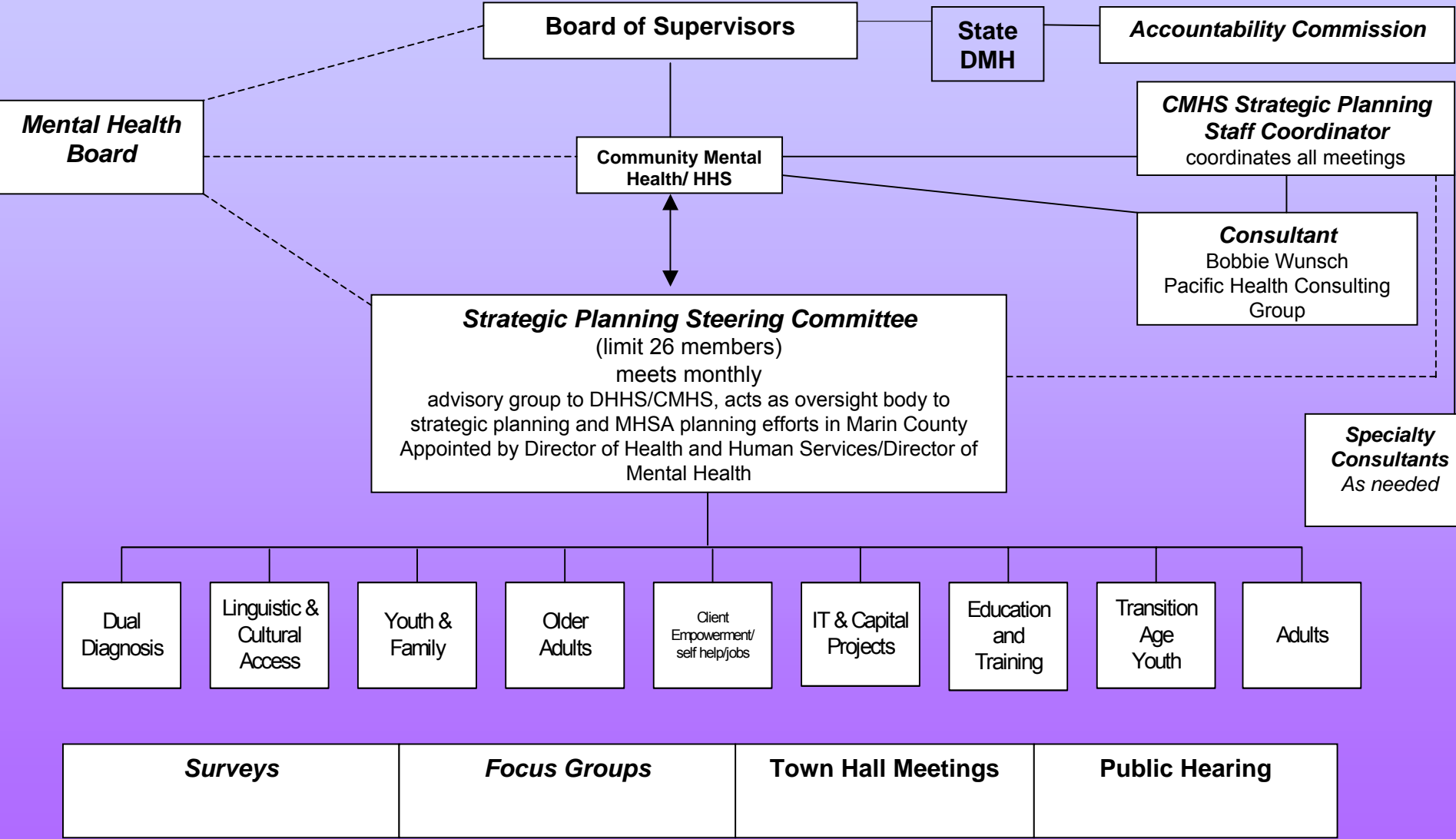
1. Local Planning
2. Services to Children
3. Services to Adults & Older Adults
4. Innovative Programs (within 2&3)
5. Prevention and Early Intervention
6. Education and training
7. Capital and Technology Development
8. State Planning and Administration
9. Prudent Local Reserves

Potential Statewide Revenues:

- 1999 - \$825 Million
- 2000 - \$1.2 Billion
- 2001 - \$603 Million
- 2002 - \$448 Million

Structure of MHSa Planning Process in Marin County

March 22, 2005



Workgroups

- Dual Diagnosis – Ernie & Michelina
- Cultural & Linguistic Access (C&L) - Rene
- Children & Family – Brian & Dawn
- Transition Age Youth – Ann & Chris
- Adults – Diane & Sheldon
- Older Adults – Brenda & Michele
- Client Empowerment/Self-help/Jobs – Kathy C & Larry
- Education & Training – Hutton & Don
- IT & Capital Projects – Kathy K, Richard & Teri

Plan Development:

- Special Topic workgroups inform Steering Committee
- Steering Committee Develops Recommendations
- Staff/Consultant Develop Draft Plan
- Plan Reviewed in Draft Form for Comment - Public Hearing by MHB
- County Plan Submitted to State

Workgroups:

- Each Group Meets Three Times
- Completed by May 17th
- Thoughts About Transforming Public Mental Health
- Specific Recommendations to the Steering Committee

Start With:

- Desired Outcomes
- Find Best Practices
- Decide How to Apply Them Locally

Proposed Marin Planning Process

Partial List of Stakeholders

- **Clients**
- **Families of Adult Clients**
- **Families of Child Clients**
- **Contract Providers**
- **Clinical Staff – Adult Services**
- **Clinical Staff – Youth and Family Services**
- **Alcohol and Drug Treatment Providers**
- **First Five Commission**
- **Health Care Providers**
- **County Office of Education**
- **Older Adults**
- **Hispanic Population**
- **African American Population**
- **Vietnamese Population**
- **Administrative Support Staff**
- **Mental Health Board**
- **National Alliance for the Mentally Ill**
- **Law Enforcement**
- **Physicians**

WHAT WORKS!

**Integrated Services for People with
Psychiatric Disabilities who are
Homeless: AB 2034
November 2004**

Overview - Legislation

Legislative funding to provide outreach and integrated services to people who are homeless and have a psychiatric disability

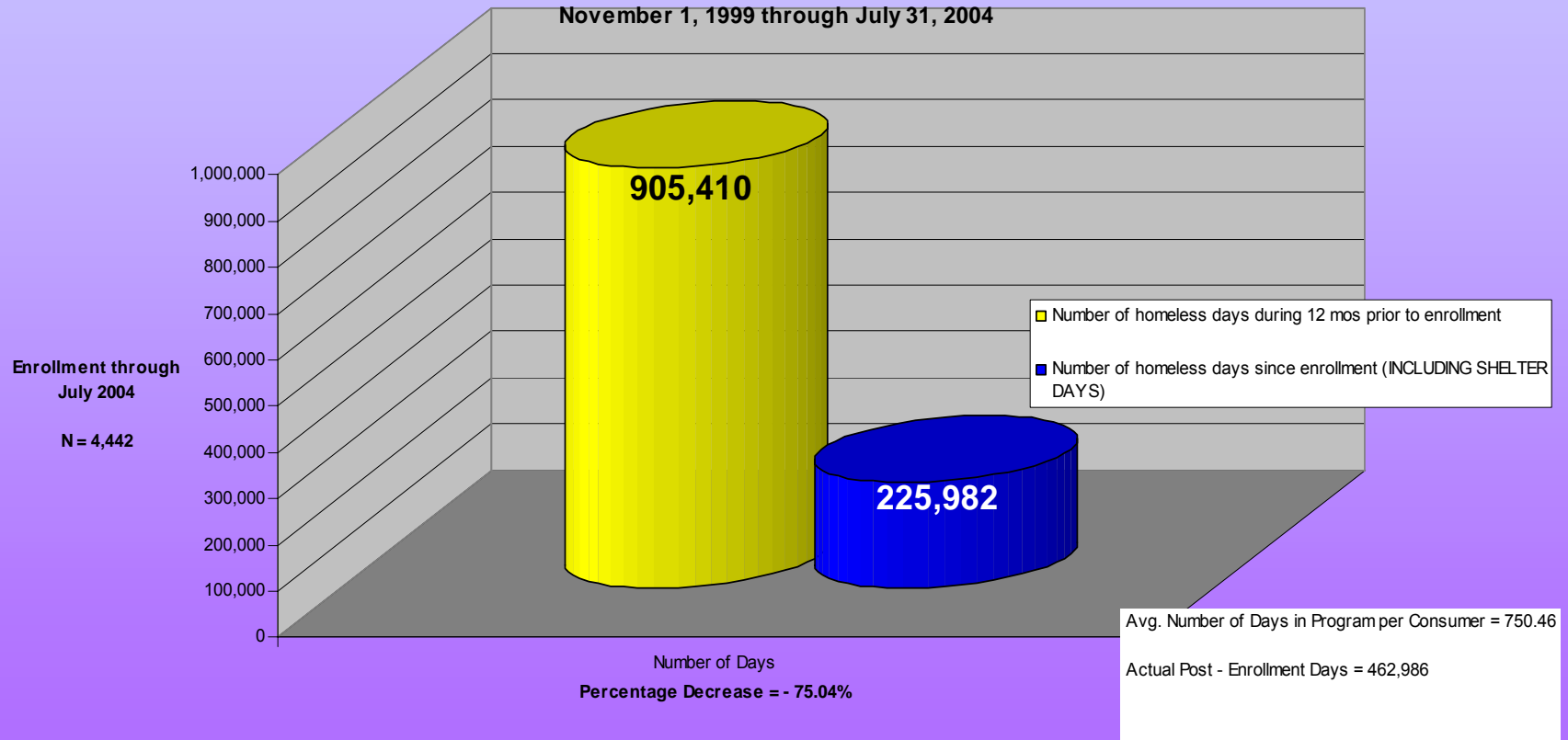
Legislation required reductions in

- Homelessness
- Incarceration
- Acute psychiatric hospitalization

**AB 2034 Outcomes
as of June 30, 2004**

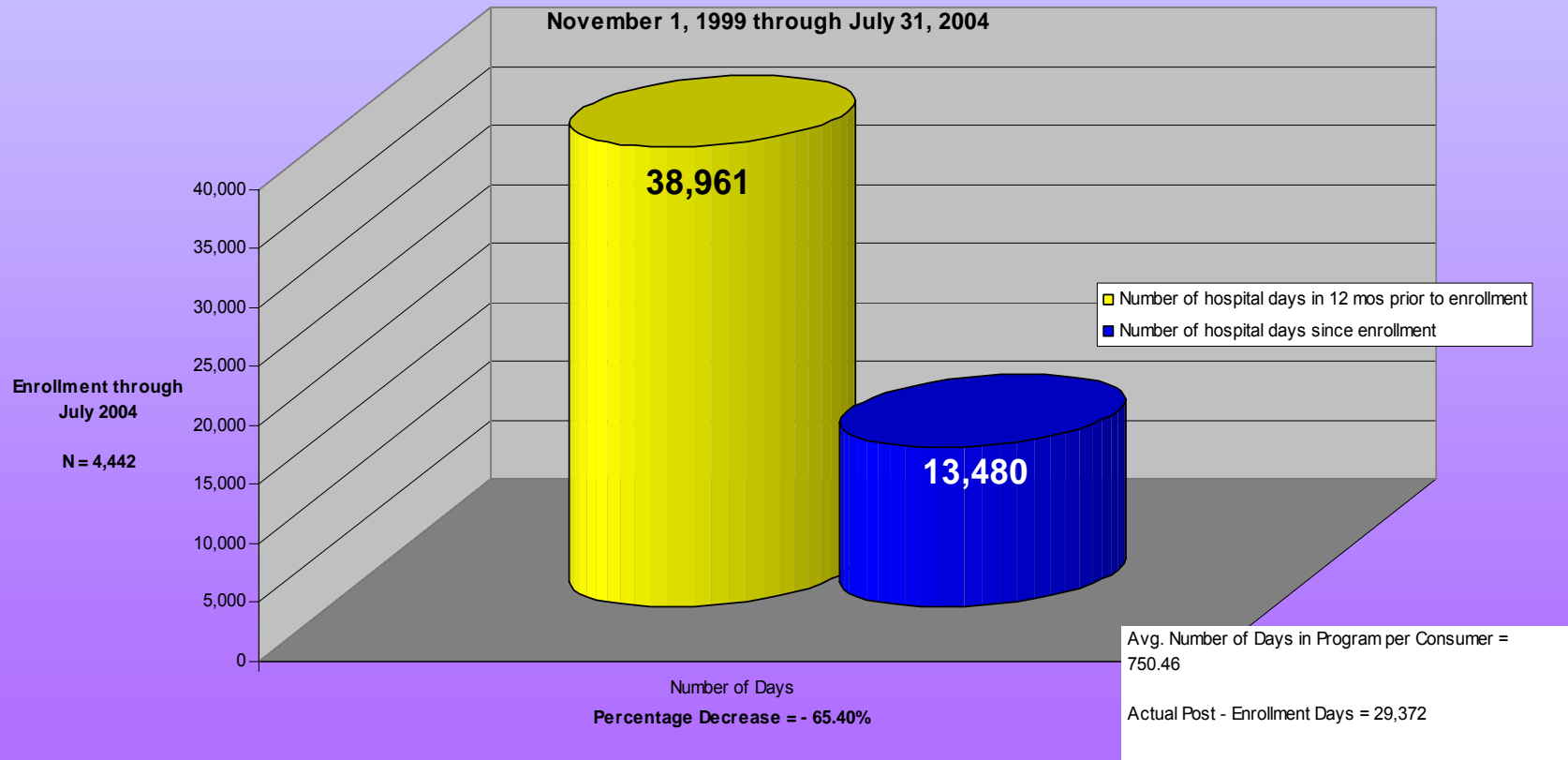
Success of AB 34/2034 – Reduced Homelessness Statewide

Table 7
Homelessness - Number of Days
All Enrollees - Annualized
November 1, 1999 through July 31, 2004



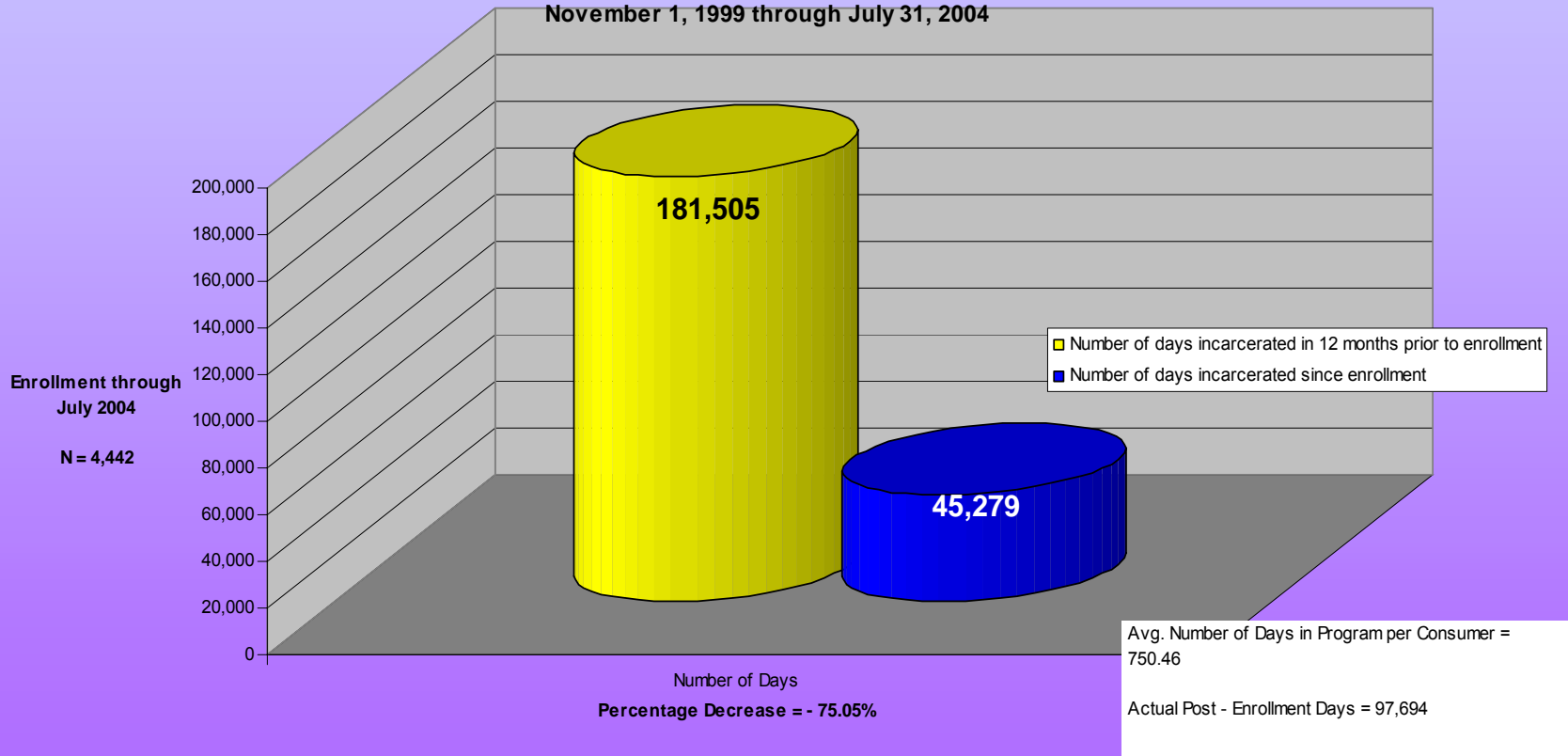
Success of AB 34/2034 – Reduced Hospitalization -- Statewide

Table 3
Psychiatric Hospitalizations - Number of Days
All Enrollees - Annualized Data
November 1, 1999 through July 31, 2004



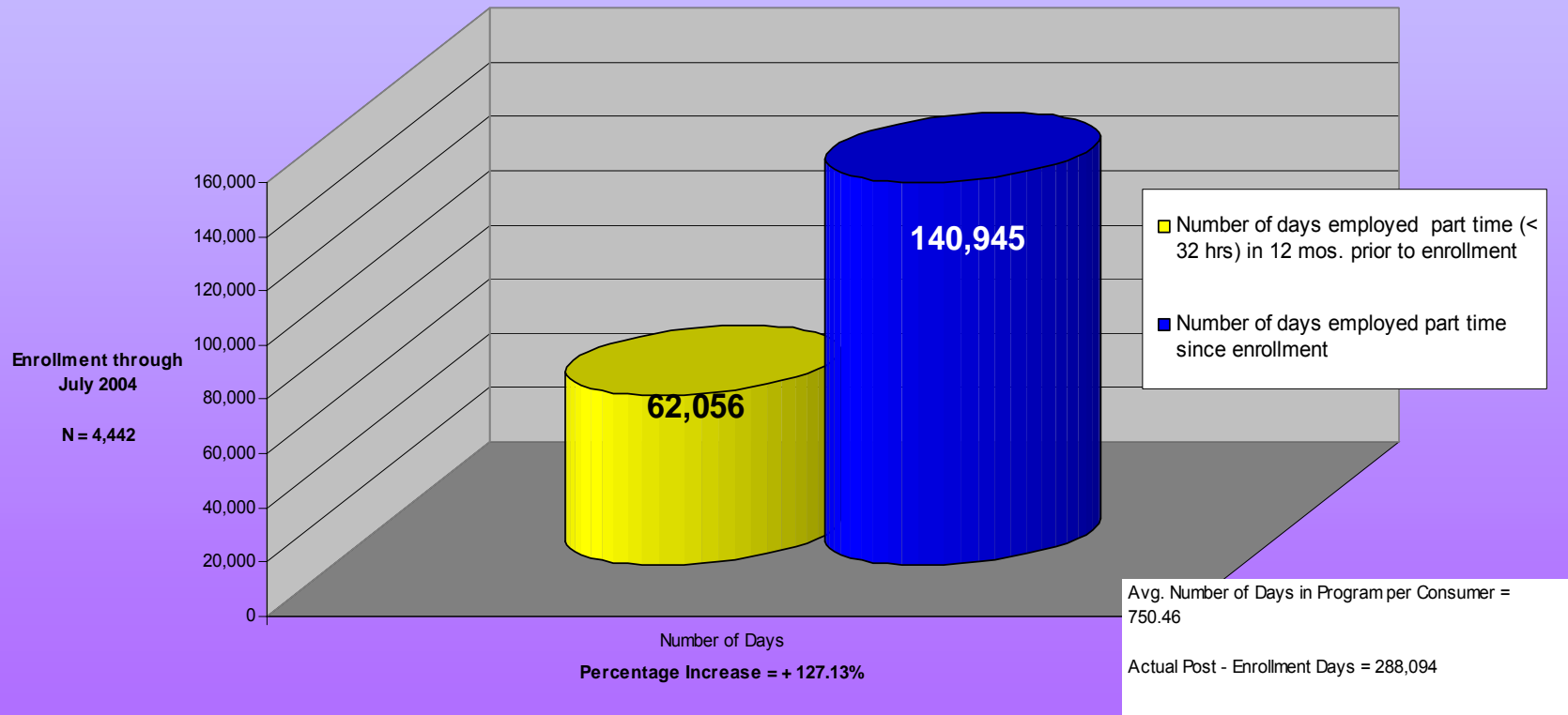
Success of AB 34/2034 – Reduced Incarceration -- Statewide

Table 6
Incarcerations - Number of Days
All Enrollees - Annualized
November 1, 1999 through July 31, 2004



Success of AB 34/2034 – Employment -- Statewide

Table 11
Employment - Number of Part-Time Days
All Enrollees - Annualized
November 1, 1999 through July 31, 2004



Websites for More Information:

- CMHS Marin: www.co.marin.ca.us
- DMH: www.dmh.cahwnet.gov
- Presidents New Freedom Commission Report: www.mentalhealthcommission.gov
- California Mental Health Planning Council: www.dmh.ca.gov/mhpc
- Network of Care: www.networkofcare.org (Click on mental health then click on San Mateo)
- California Network of Mental Health Clients: www.californiaclients.org