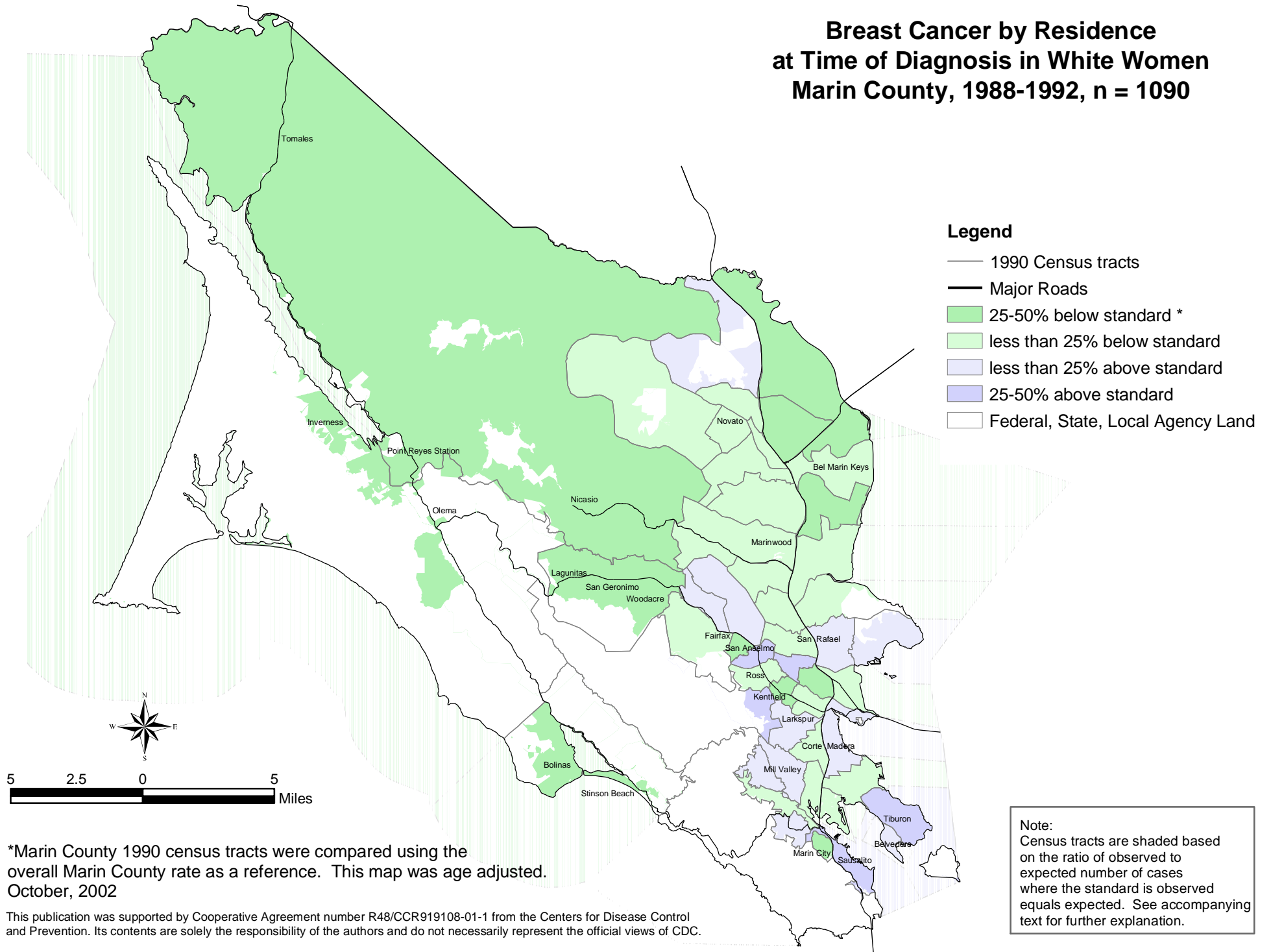


Breast Cancer by Residence at Time of Diagnosis in White Women Marin County, 1988-1992, n = 1090



*Marin County 1990 census tracts were compared using the overall Marin County rate as a reference. This map was age adjusted. October, 2002

This publication was supported by Cooperative Agreement number R48/CCR919108-01-1 from the Centers for Disease Control and Prevention. Its contents are solely the responsibility of the authors and do not necessarily represent the official views of CDC.