

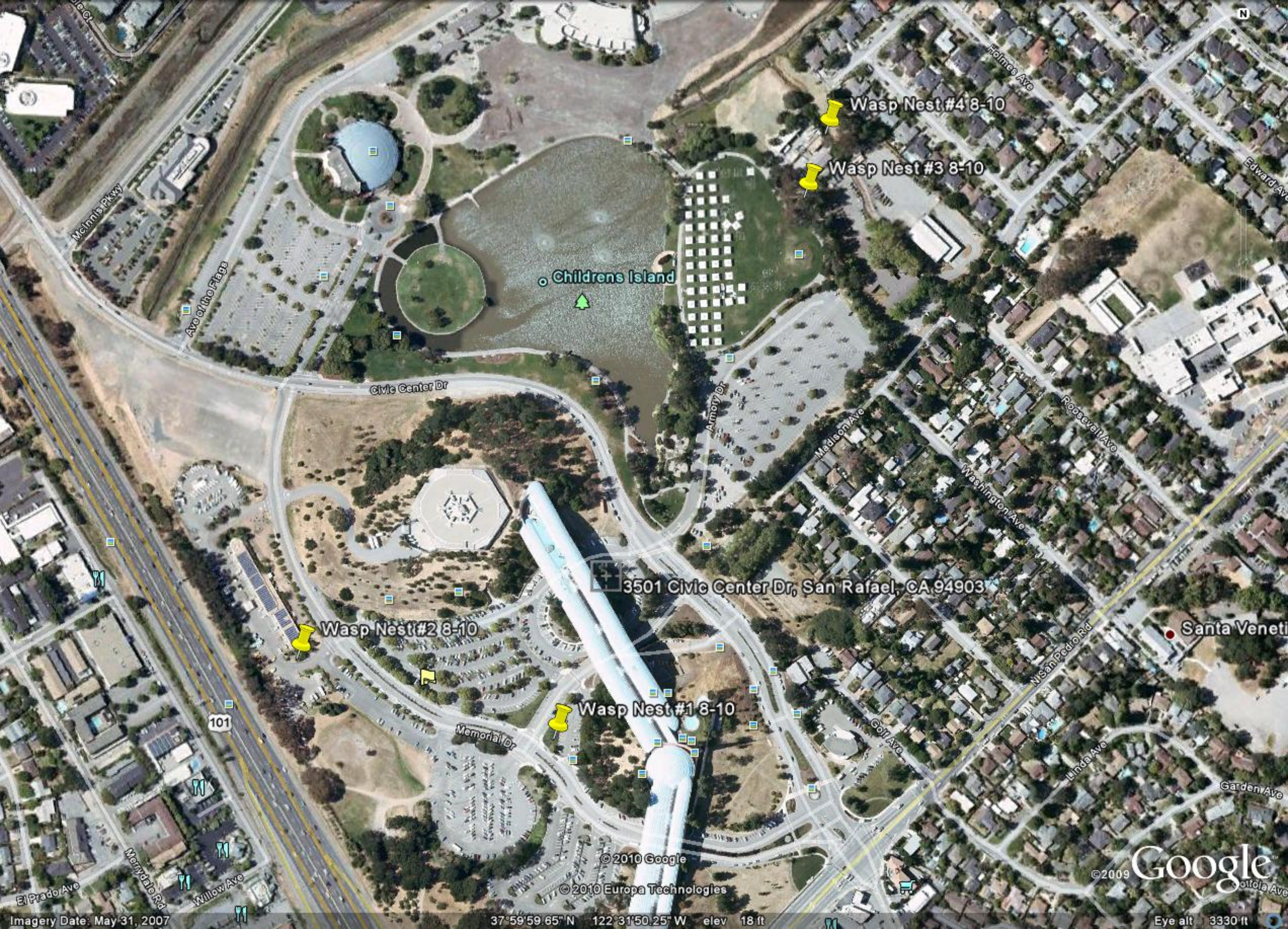
# **NOTICE OF PESTICIDE APPLICATION**

**Marin County Ordinance No. 3286**

**Section 23.19.160**

<b>Pesticide Name</b>	<b>Wasp Freeze</b>
<b>Active Ingredient</b>	<b>Allethrin &amp; Phenothrin</b>
<b>Target Pest</b>	<b>Yellow Jacket Wasps</b>
<b>Area to be Treated</b>	<b>Wasp Nests</b>
<b>Dates of Application</b>	<b>8-16—8-18-2010</b>
<b>Signal Word</b>	<b>CAUTION</b>
<b>EPA#</b>	<b>499-362</b>
<b>Re-entry Period</b>	<b>When Material Is Dry</b>
<b>For Further Information</b>	<b>507-4046</b>

**All pesticides are applied in accordance with State and Federal regulations**



Childrens Island

Wasp Nest #4 8-10

Wasp Nest #3 8-10

3501 Civic Center Dr, San Rafael, CA 94903

Wasp Nest #2 8-10

Wasp Nest #1 8-10

Santa Veneti

© 2010 Google

© 2010 Europa Technologies

© 2009

Google

Imagery Date: May 31, 2007

37°59'59.65" N 122°31'50.25" W elev 18 ft

Eye alt 3330 ft