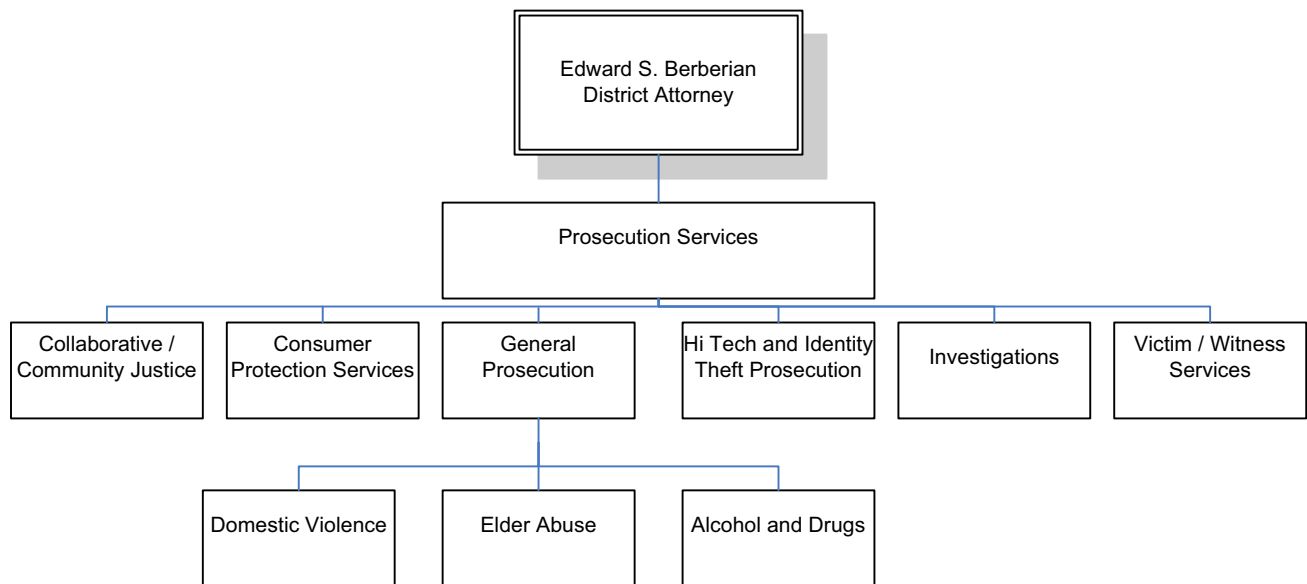


District Attorney

Edward S. Berberian, District Attorney

The mission of the District Attorney's Office is to enhance the quality of life in Marin County by taking a pro-active role in preventing crime, prosecuting with integrity, equality and excellence, and protecting the community by effectively dealing with those who prey upon our residents.



DEPARTMENT SUMMARY

All Funds	FY 2008-09 Actual	FY 2009-10 Proposed	FY 2009-10 Approved	FY 2010-11 Recommended	FY 2010-11 Change
Expenditures					
Salaries & Benefits	\$11,581,580	\$12,427,376	\$12,109,254	\$12,334,199	\$224,945
Service and Supplies	2,036,906	3,482,555	3,482,555	3,482,555	-
Interdepartmental Charges	385,808	306,240	306,240	444,175	137,935
Total Expenditures	\$14,004,294	\$16,216,171	\$15,898,049	\$16,260,929	\$362,880
Revenues					
Intergovernmental Revenues	\$4,729,934	\$6,593,792	\$6,593,792	\$6,405,302	(\$188,490)
Charges for Current Services	242,106	100,085	100,085	100,085	-
Miscellaneous Revenues	817,871	955,630	955,630	851,417	(104,213)
Total Revenues	\$5,789,911	\$7,649,507	\$7,649,507	\$7,356,804	(\$292,703)
Net County Cost (NCC)	\$8,214,383	\$8,566,664	\$8,248,541	\$8,904,125	\$655,584
Allocated Positions (FTE)	93.75	90.75	87.75	84.75	(3.00)

Department Overview

The Office of the District Attorney is the public prosecutor responsible for attending the courts and conducting all prosecutions for public offenses on behalf of the people. The California Constitution mandates that each county have an elected District Attorney. The District Attorney is an officer of the county and also an officer of the state when engaged in the prosecution of crimes defined under state law.

The District Attorney's Office has two operational divisions that provide mandated services in the areas of prosecution, protection and prevention: the General Prosecution Division and the Targeted Prosecution Division. The units within the divisions are responsible for conducting the prosecution of public offenses committed within Marin County.

The General Prosecution division has within its structure five vertical felony trial teams, as well as the Misdemeanor Trial Unit. Vertical prosecution is one of the key organizational components whose construct reduces inconvenience to crime victims and law enforcement personnel.

The Targeted Prosecution division has a number of operational units that focus on specific activities. The specialized units include: Intake, Family Violence, Juvenile, Sexual Assault Specialist, Insurance Fraud, Law and Motion, Consumer Fraud and the Community Justice Attorney whose responsibilities

include elder financial abuse, the Drug Courts and the Mental Health Court.

As an adjunct and in support of the two prosecutorial divisions of the office, there is an Administrative Unit, Investigations Unit and Victim/Witness Program Unit.

Description and Impacts of Budget Reductions

FTE Reduced	Change in Expenditure	Change in Revenue	Change in Net County Costs
(3.00)	(\$335,192)	-	(\$335,192)

- **Description:** Reduce 1.0 FTE District Attorney Inspector, 1.00 FTE Victim Witness Advocate and 1.0 FTE Victim Witness Supervisor Bilingual through Voluntary Separation Incentive Program.
- **Programmatic Impacts of Proposed Changes:** Minimal impact.

District Attorney

PUBLIC SAFETY

Overview of Programs

FY 2010-11 Estimated Cost of Program Services

DISTRICT ATTORNEY PROGRAM SUMMARY				
General Fund Program Services	FTE	Total Expenditures	Total Revenues	Net County Cost
Prosecution Services	70.00	\$11,353,993	(\$2,866,131)	\$8,487,862
Consumer Protection	5.00	\$764,475	(\$764,475)	-
Victim / Witness Services	5.00	\$450,839	(\$181,939)	\$268,900
High Tech and Identity Theft Prosecution	4.00	\$464,511	(\$464,511)	-
Collaborative Justice	0.75	\$147,363	-	\$147,363
Total	84.75	\$13,181,181	(\$4,277,056)	\$8,904,125
% of Budget			32%	68%
Other Funds Program Services	FTE	Total Expenditures	Total Revenues	Transfer/Use of Fund Balance
High Tech and Identity Theft	-	\$3,079,748	(\$3,079,748)	-
Total	-	\$3,079,748	(\$3,079,748)	-

Prosecution Services

Program Description and Responsibilities

Prosecution Services	FTE	Total Expenditures	Total Revenues	Net County Cost
FY 2010-11 General Fund Program Budget	70.00	\$11,353,993	(\$2,866,131)	\$8,487,862

The Prosecution Services program has two operational divisions, General Prosecution and Targeted Prosecution, that provide mandated services in the area of prosecution, protection and prevention. These divisions are responsible for conducting the prosecution of public offenses committed within Marin County.

Consumer Protection

Program Description and Responsibilities

Consumer Protection	FTE	Total Expenditures	Total Revenues	Net County Cost
FY 2010-11 General Fund Program Budget	5.00	\$764,475	(\$764,475)	-

The Consumer Protection Unit is responsible for handling a broad spectrum of consumer protection activities. The primary focus of this unit is to protect residents from fraudulent or dishonest business practices. There are four major areas of responsibility:

- **Enforcement:** This area of responsibility deals with illegal business practices, environmental issues, major fraud and restitution collection. This unit includes investigation as well as civil and criminal prosecution of cases involving unfair business practices, false or misleading advertising, state antitrust violations, state securities law violations, contractor licensing law violations and toxic substance and environmental law violations.
- **Mediation:** This area of responsibility handles consumer-business vendor dispute mediation and education of both consumers and retailers.
- **Referral:** This area of responsibility consists of directing consumer complaints received by staff to the proper state regulatory agencies established to deal with issues such as air pollution, campaign law violations, water pollution and toxic spills.
- **Outreach:** This area of responsibility involves providing speakers upon request to community groups who are concerned about con artists, scams or financial abuse of elders. The unit works with local non-profits and commissions devoted to preventing seniors from being victims of theft or embezzlement.

Victim / Witness Services

Program Description and Responsibilities

Victim / Witness Services	FTE	Total Expenditures	Total Revenues	Net County Cost
FY 2010-11 General Fund Program Budget	5.00	\$450,839	(\$181,939)	\$268,900

The Victim/Witness Services program is responsible for providing direct services, referral services and community outreach services to victims and witnesses of crime. Some of

the direct services offered by the program include advisement of case status, support throughout the criminal justice process, assistance with Victims of Violent Crime (VOVC) restitution claims to the State Board of Control, crisis intervention support, assistance with Victim Impact Statements, referrals to other agencies, and assistance with recovery from the effect of the crime.

Program staff participates in the Child Abuse Treatment (CHAT) program as part of the Jeannette Prandi Children's Center (JPCC) and provides assistance to families through referrals and helps with the criminal justice process and victim compensation claims.

High Tech and Identity Theft Prosecution Program Description and Responsibilities

High Tech and Identity Theft Prosecution	FTE	Total Expenditures	Total Revenues	Net County Cost
FY 2010-11 General Fund Program Budget	4.00	\$464,511	(\$464,511)	-
FY 2010-11 High Tech and Identity Theft Fund Program Budget	-	\$3,079,748	(\$3,079,748)	-

The High Technology Theft Apprehension and Prosecution (HTTAP) program is supported by two grants from the Governor's Office of Emergency Services.

The HTTAP program develops a comprehensive written strategy to address high technology crime throughout California and reports annually to the State Legislature. The program seeks to assist local law enforcement and District Attorneys in providing the tools necessary to successfully interdict high technology crime in the jurisdiction of the five task forces. Investigation and prosecution of identity theft crimes is also included under this program, including Internet tracing and computer forensics, conducting identity theft "sting" operations and shutting down fraudulent document printers employed as paper mills.

Collaborative Justice

Program Description and Responsibilities

Collaborative Justice	FTE	Total Expenditures	Total Revenues	Net County Cost
FY 2010-11 General Fund Program Budget	0.75	\$147,363	-	\$147,363

In collaboration with the Marin County Superior Court, Public Defender, Probation and Health and Human Services departments, the District Attorney has implemented Collaborative Justice Court models including the Adult Drug Court, Juvenile Drug Court, the Support and Treatment After Release (STAR) Mentally Ill Offender Court and Treatment Program and a Proposition 36 Court. These collaborative courts help to coordinate the rehabilitation and treatment of offenders by focusing on health and social issues that are often the underlying causes of crime.

Offenders must meet acceptance guidelines to participate in each court and enrollment is limited. Participants must follow a treatment program and meet certain goals and standards to "graduate" from the court. Participating departments meet weekly with the presiding judge to discuss the progress of participants prior to holding weekly sessions where participants check in with the judge and may face penalties for variance from the program's requirements.

For more information about Collaborative Justice, please reference the following program descriptions:

- Health and Human Services: Support and Treatment After Release (STAR) Program, Proposition 36 Court, Adult Drug Court
- Public Safety: Adult Drug Court, Juvenile Drug Court, Family Violence Courts