

# Community Profile

## Introduction

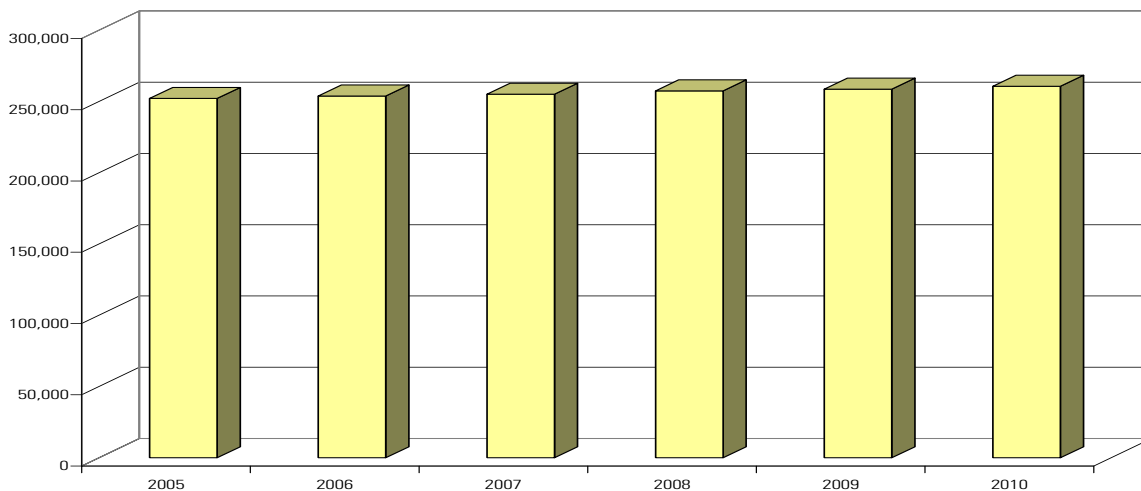
The Community Profile uses the most recent available data to provide basic demographic information about Marin County, as well as a comparison of Marin County to similar counties in California. The first part highlights basic population, employment, housing, ethnicity and age data to provide a snapshot of the county. The second part uses several measures to compare Marin to seven other counties facing similar challenges.

## Marin County Demographic and Statistical Profile

On its southern end, Marin County faces the San Francisco Bay and is linked to San Francisco by the Golden Gate Bridge. The western end of the county faces the Pacific Ocean, and in the north and northeast, the county is bounded by Sonoma County. The eastern border fronts San Pablo Bay and connects to the East Bay via the Richmond-San Rafael Bridge.

The rural coastal corridor and inland valleys feature vast acreage of land in agricultural production, as well as open space for tourism and recreation. Some of the notable attractions that draw visitors to Marin County and its cities include the Golden Gate Bridge, the Marin Headlands, Mount Tamalpais, Muir Woods, and the Point Reyes National Seashore.

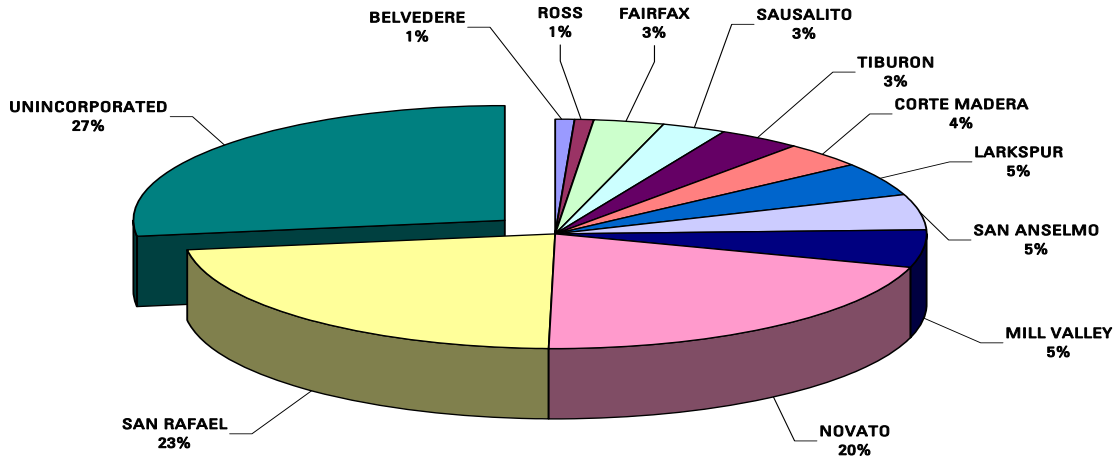
### Chart A: Population of Marin County



California Department of Finance, May 2009

Chart A demonstrates the relatively slow and nearly flat population growth since 2005. As of January 2010, the California Department of Finance estimates the total county population to be 260,651.

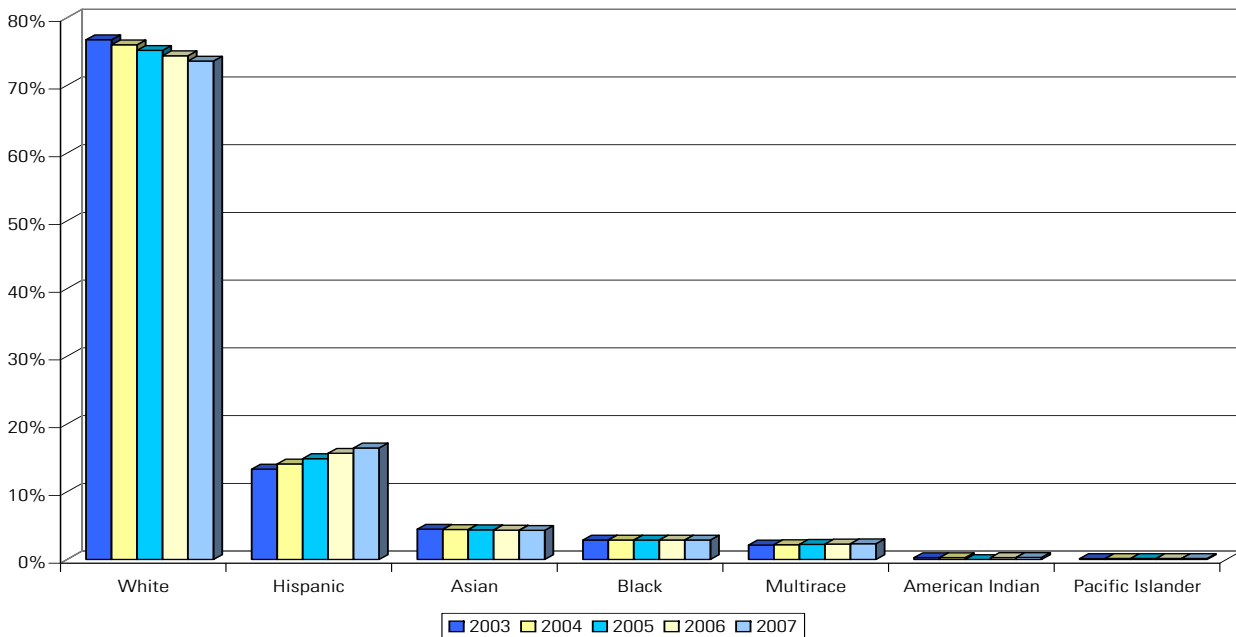
**Chart B: Composition of Marin County Incorporated and Unincorporated Population**



California Department of Finance, January 2009

Chart B illustrates that the unincorporated portion of Marin - the area for which the County of Marin provides municipal services - represents 27% of the county's total population. The rest of Marin County's residents receive services from one of their 11 different municipal governments.

**Chart C: Marin County Population by Ethnicity**

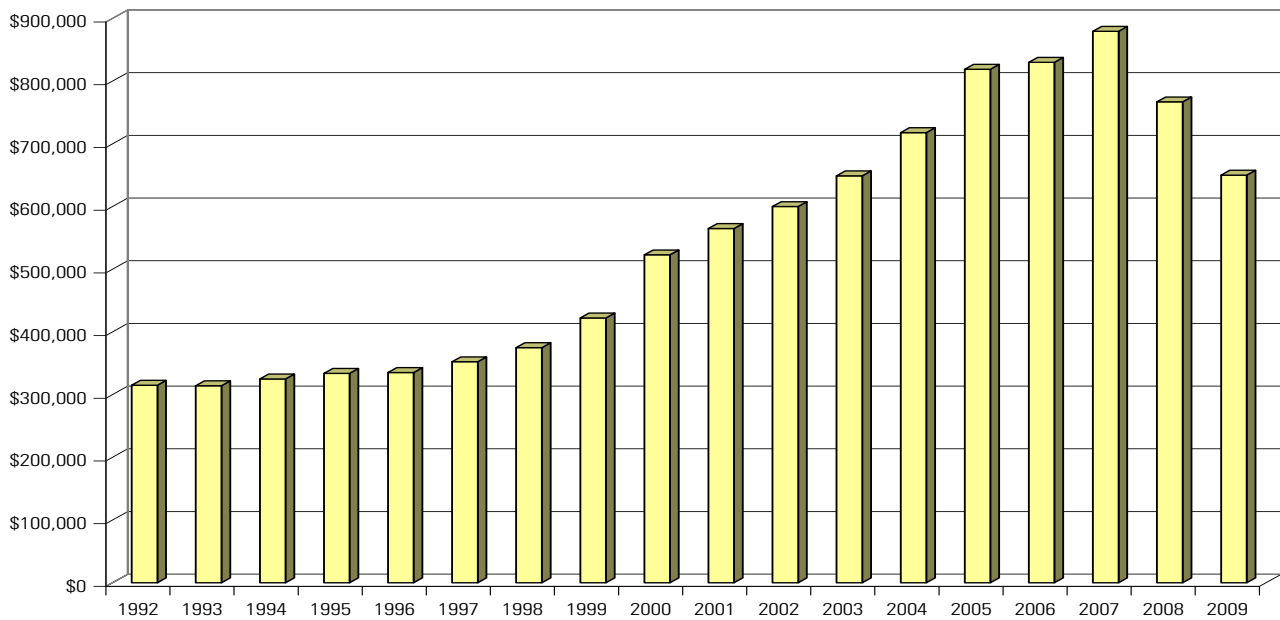


California Department of Finance, April 2009

Marin County continues to become a more ethnically diverse community. Chart C shows that a slight decline in the White population has been offset by growth in the Hispanic population between 2003 and 2007.

# Community Profile

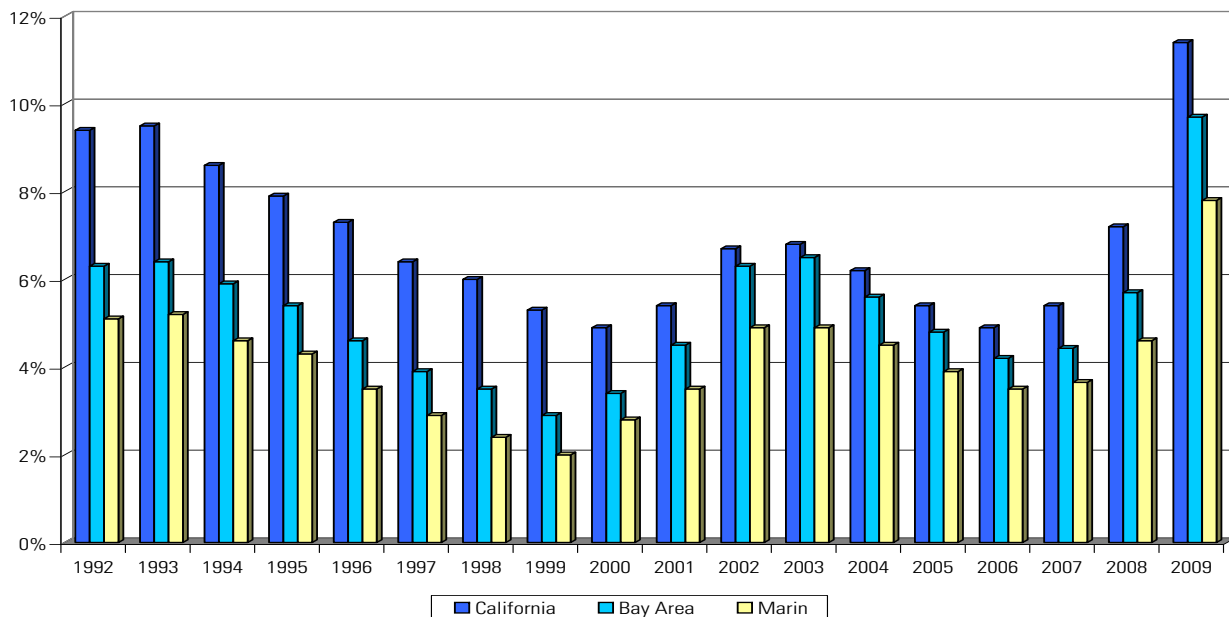
**Chart D: Median Home Sale Prices for Marin County**



Marin County Assessor, 2009

Chart D shows that the median sale price for detached and attached single-family homes almost doubled from 2000 to 2007. However, as the above chart illustrates, housing prices have declined significantly since 2008.

**Chart E: Annual Unemployment Rates in Marin County, Bay Area and California**



U.S. Department of Labor, Bureau of Labor Statistics, 2009

Marin County unemployment rates historically have been lower than other Bay Area and statewide rates. Chart E illustrates Marin's relatively low unemployment rate compared to the Bay Area and California since 1991. Nevertheless, Marin County has seen a significant upturn in unemployment starting in 2007.

**Chart F: Top Ten Employers in Marin County in 2009**

Rank	Company	Industry	Location	Jobs
1	County of Marin	Local Government	San Rafael	2,223
2	San Quentin State Prison	Prison	San Quentin	1,813
3	Kaiser Permanente Medical Center	Health Care	San Rafael	1,331
4	Autodesk, Inc.	Software	Countywide	1,028
5	Marin General Hospital	Health Care	Greenbrae	975
6	Fireman's Fund Insurance Co.	Insurance	Novato	947
7	Novato Unified School District	Education	Novato	683
8	BioMarin Pharmaceutical	Biopharmaceutical	Novato	632
9	Comcast	Telecommunications	San Rafael	619
10	Safeway Inc.	Grocery	Countywide	452

North Bay Business Journal, California Dept of Corrections and Rehabilitation, Novato Unified School District, BioMarin

The County of Marin was the largest employer in 2009, followed by San Quentin State Prison and Kaiser Permanente Medical Center. BioMarin Pharmaceutical is based in Novato and is new to the list this year.

## Comparison Counties

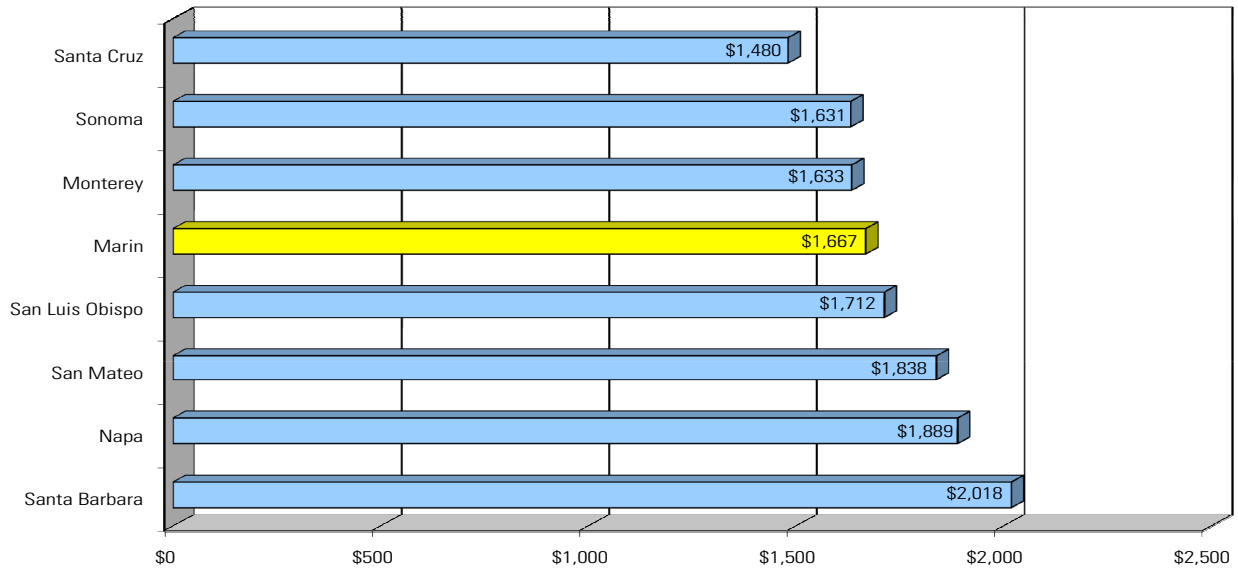
Marin County selected seven counties (San Mateo, Sonoma, Monterey, Santa Barbara, Santa Cruz, San Luis Obispo and Napa) for comparison purposes based on some shared characteristics:

- Coastal or Bay Area counties
- Emphasis on environmental preservation and scenic beauty
- Both suburban and rural environments
- Most have urban growth versus rural preservation issues

The following charts provide economic and demographic comparisons between Marin County and these comparison counties.

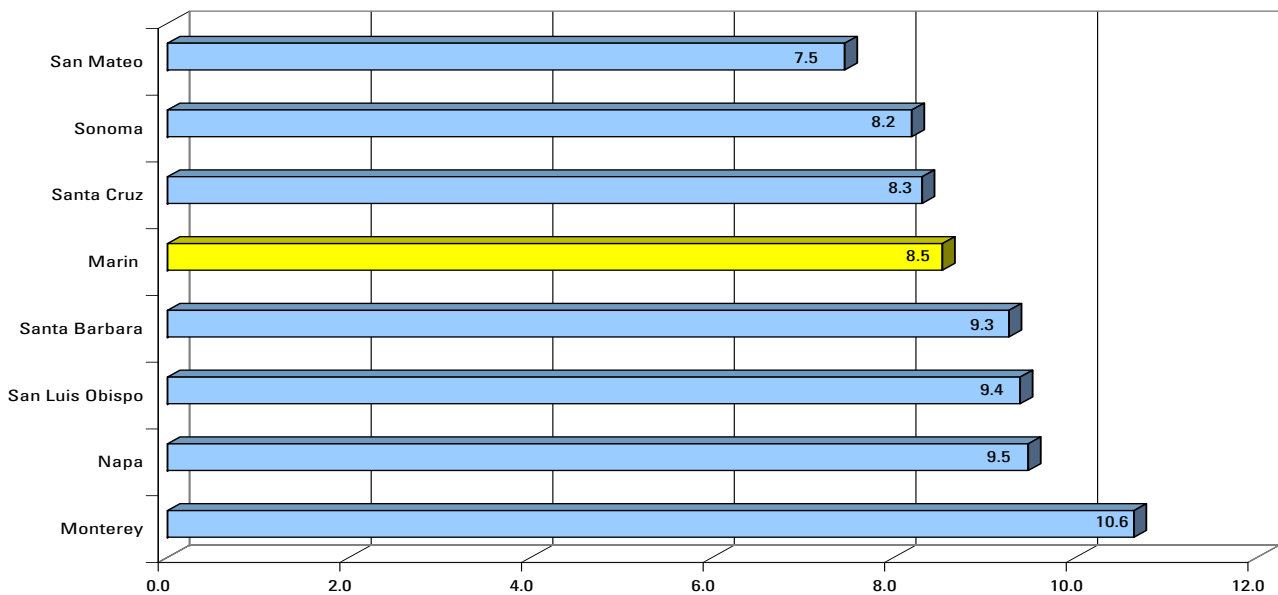
# Community Profile

**Chart G: Average Budgeted County Expenditures per Resident (All Funds)**



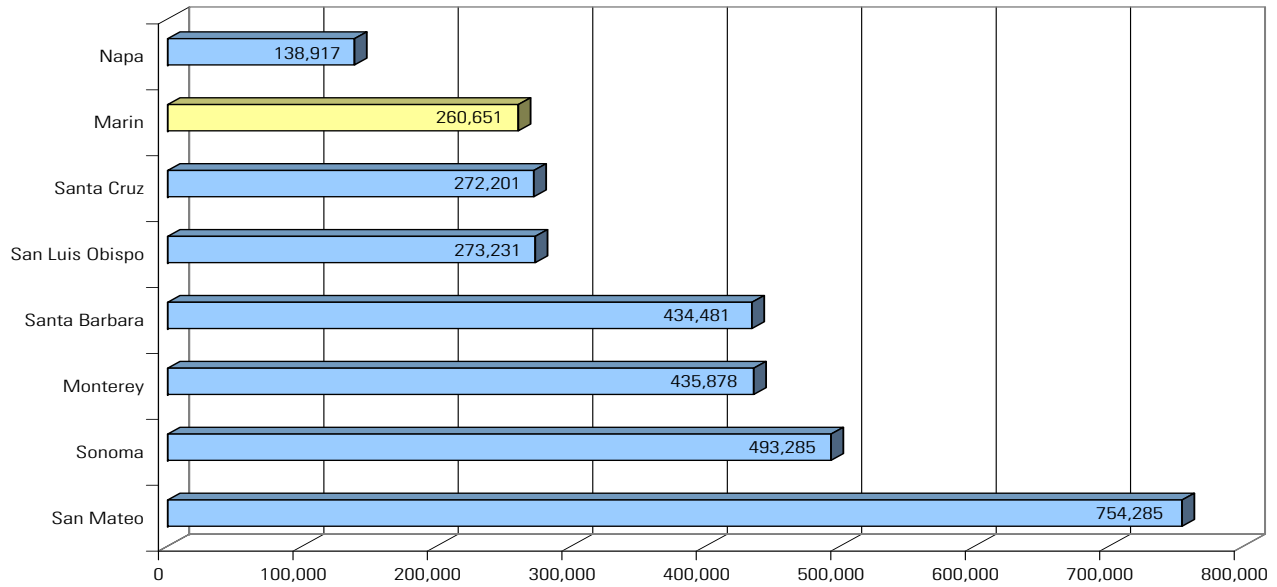
Fiscal Year 2009-10 Comparison Counties' Final Budgets (Schedule 1 - less Special Districts); California Department of Finance, May 2010

**Chart H: Total Full-Time Equivalent Employees per 1,000 Residents**



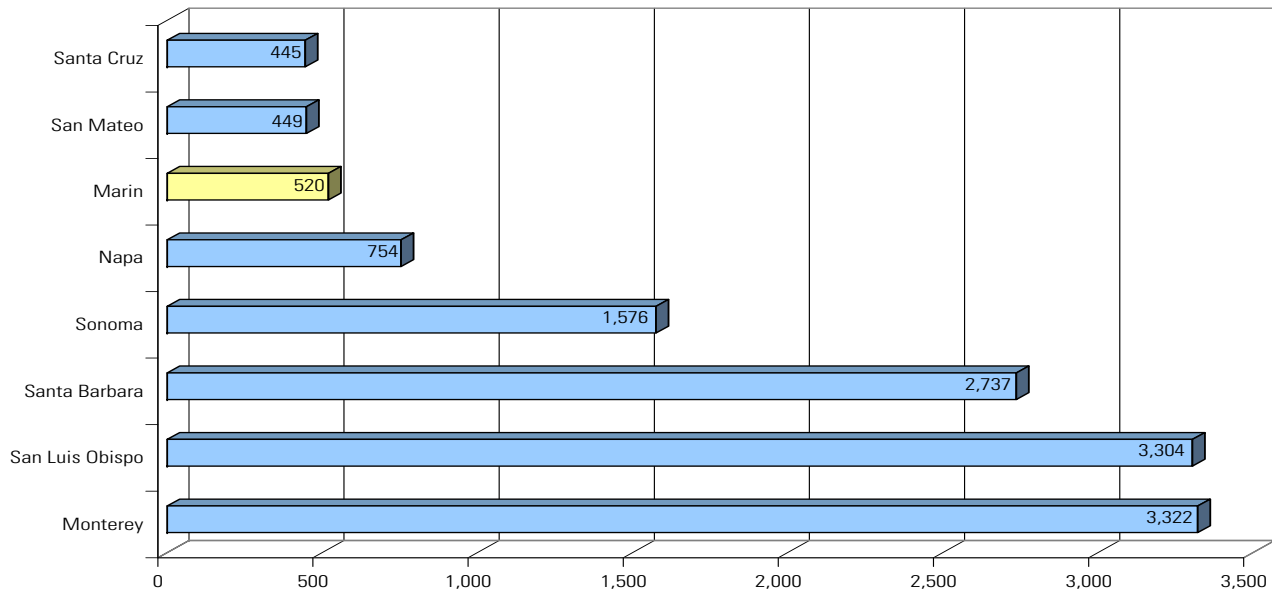
Fiscal Year 2009-10 Comparison Counties' Budgets and California Department of Finance, May 2010

## Chart I: Population



California Department of Finance, May 2010

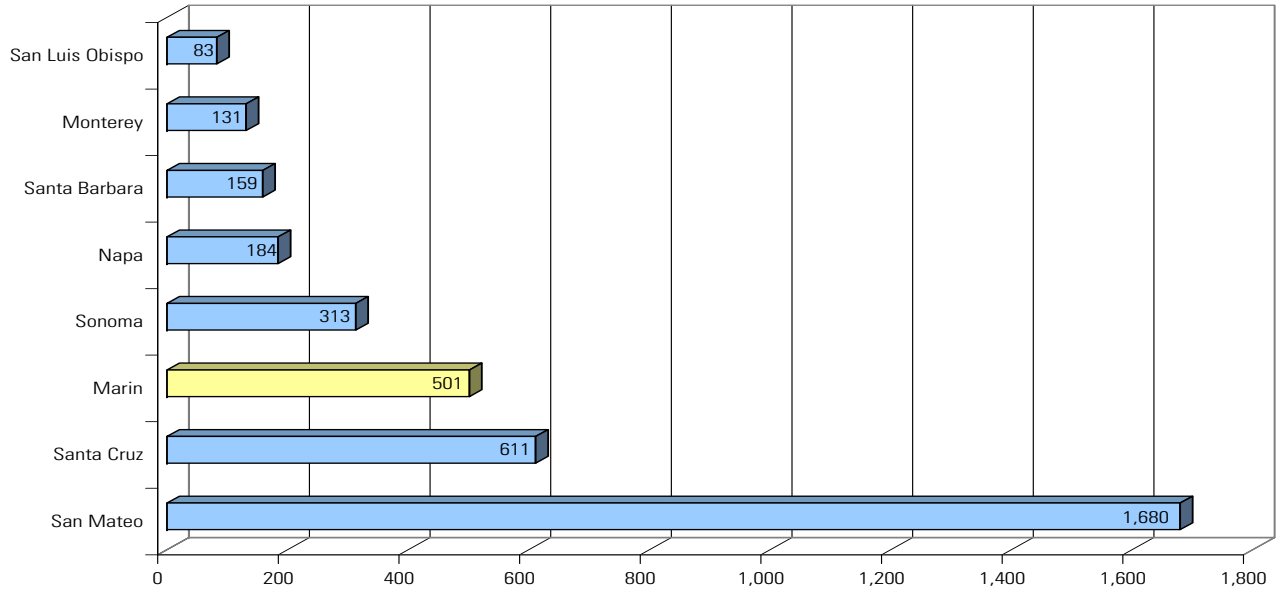
## Chart J: Land Area in Square Miles



U.S. Census Bureau, Census 2000

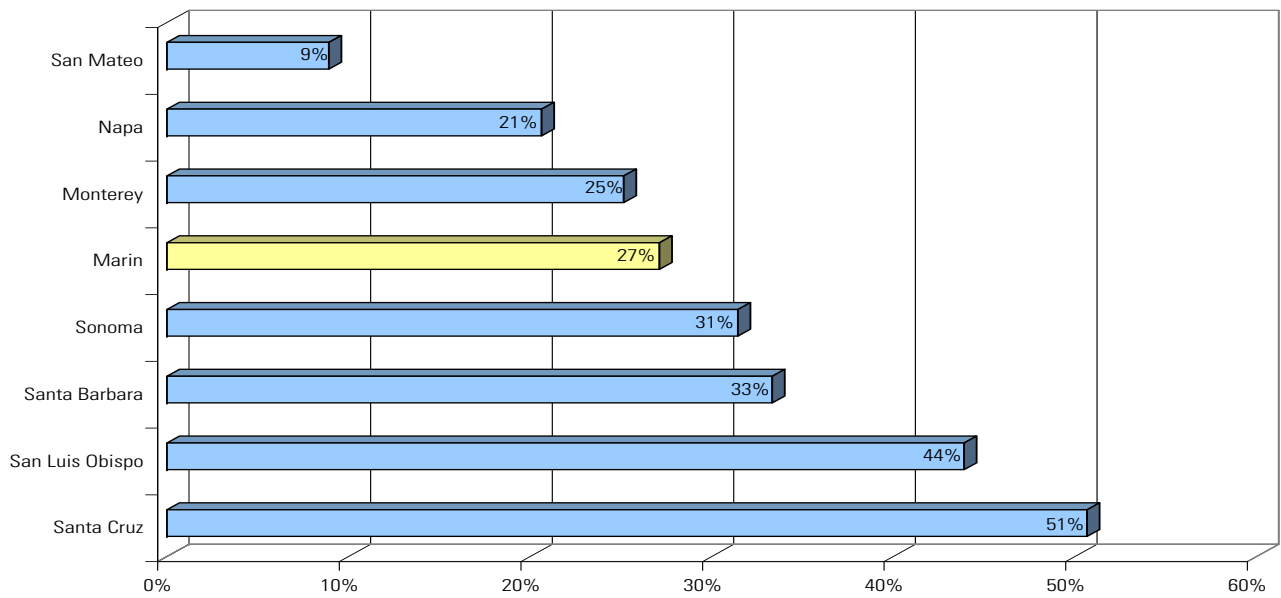
# Community Profile

**Chart K: Population Density per Square Mile**



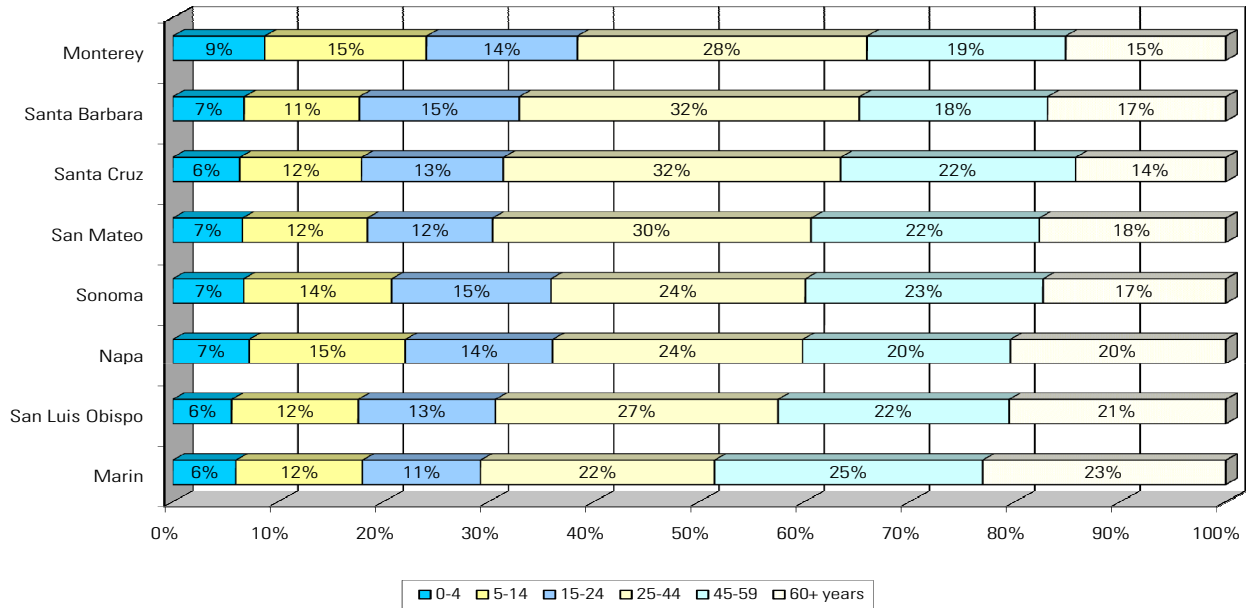
California Department of Finance, May 2010 and U.S. Census Bureau, Census 2000

**Chart L: Percent of Population Residing in Unincorporated Area**



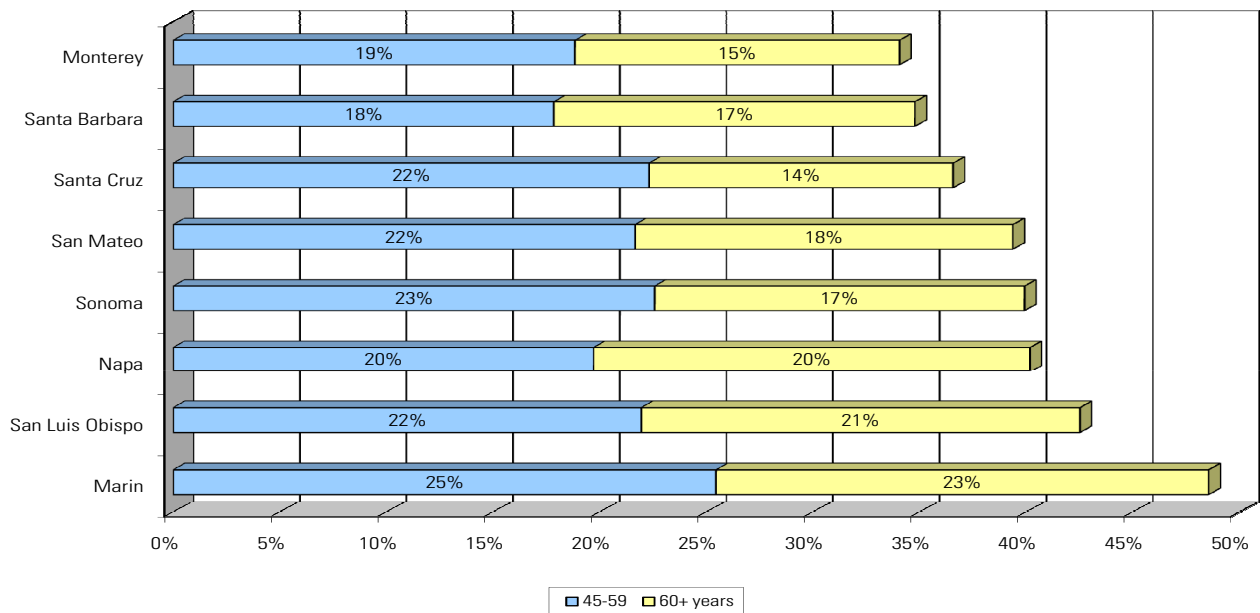
California Department of Finance, May 2010

## Chart M: Percent of Population by Age Group



California Department of Finance, 2007 data

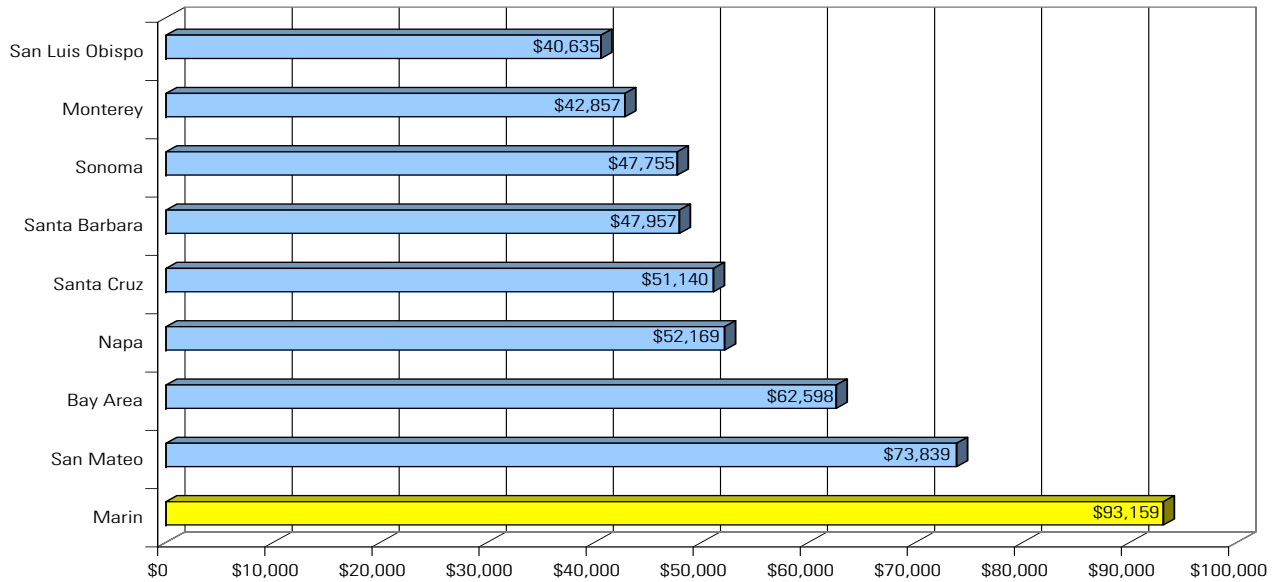
## Chart N: Percent of Population 45 Years and Over



California Department of Finance, 2007 data

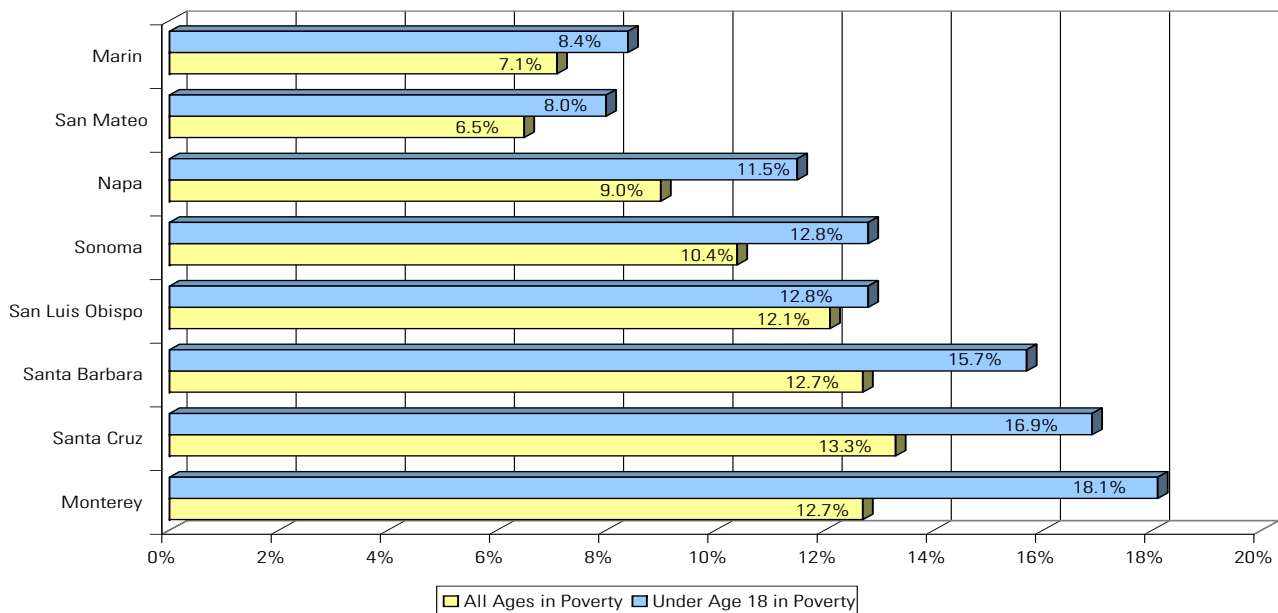
# Community Profile

## Chart O: Per Capita Personal Income



U.S. Department of Commerce Bureau of Economic Analysis, 2008

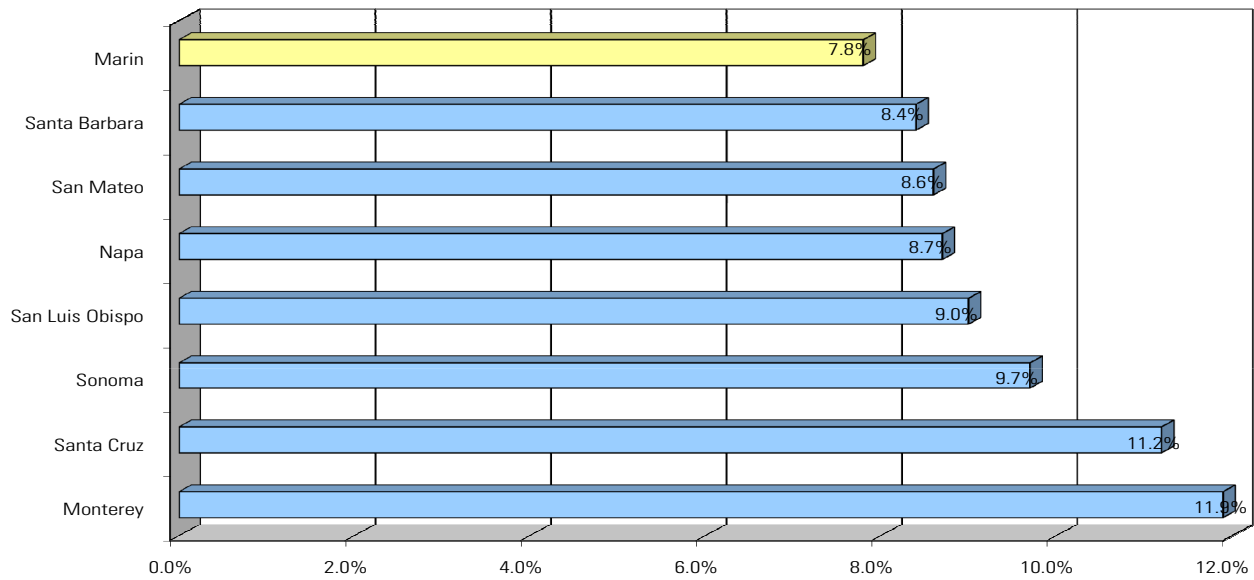
## Chart P: Percent Population in Poverty



U.S. Census Bureau Data Integration Division, 2008

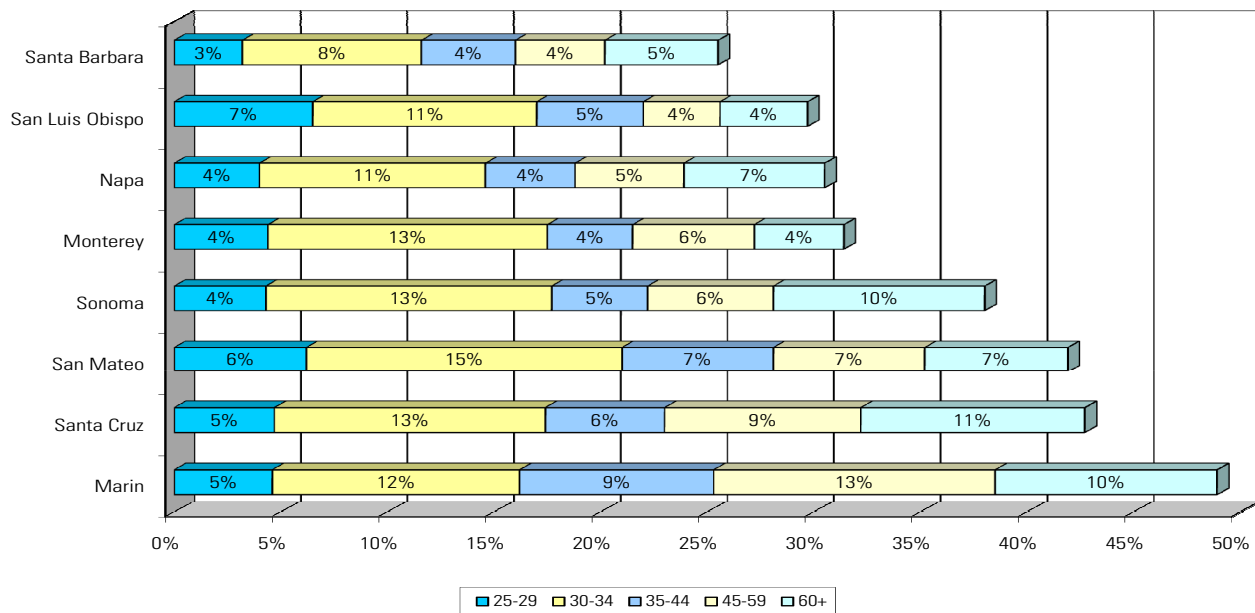
The Census Bureau uses a set of income thresholds that vary by family size and composition to determine who is in poverty. If a family's total income is less than the corresponding income threshold, then that family is considered in poverty.

**Chart Q: Annual Unemployment Rates in 2009**



U.S. Department of Labor Bureau of Labor Statistics, 2009

**Chart R: Percent of Workers with Travel Times to Work of 25 Minutes or More**



U.S. Census Bureau, 2006 American Community Survey, 2008

# Community Profile

